

## **PRODUCT MONOGRAPH**

### **Pr RIVA-CIPROFLOXACIN**

**Ciprofloxacin Tablets, BP**

**250 mg, 500 mg, 750 mg**

**Ciprofloxacin as Ciprofloxacin Hydrochloride**

**Antibacterial Agent**

**Laboratoire Riva Inc.  
660 Industriel Blvd.  
Blainville, Quebec, Canada  
J7C 3V4**

**Date of Revision:  
August 25, 2015**

**Control # 187076**

## TABLE OF CONTENTS

<b>PART 1: HEALTH PROFESSIONAL INFORMATION.....</b>	<b>3</b>
SUMMARY PRODUCT INFORMATION.....	3
INDICATIONS AND CLINICAL USE.....	3
CONTRAINDICATIONS.....	6
WARNINGS AND PRECAUTIONS.....	6
ADVERSE REACTIONS.....	11
DRUG INTERACTIONS.....	13
DOSAGE AND ADMINISTRATION.....	18
OVERDOSAGE.....	20
ACTION AND CLINICAL PHARMACOLOGY.....	20
STORAGE AND STABILITY.....	22
DOSAGE FORMS, COMPOSITION AND PACKAGING.....	22
<b>PART II: SCIENTIFIC INFORMATION.....</b>	<b>23</b>
PHARMACEUTICAL INFORMATION.....	23
CLINICAL TRIALS.....	24
DETAILED PHARMACOLOGY.....	24
MICROBIOLOGY.....	30
TOXICOLOGY.....	33
REFERENCES.....	37
<b>PART III: CONSUMER INFORMATION.....</b>	<b>40</b>

**Pr RIVA-CIPROFLOXACIN  
(Ciprofloxacin Tablets, BP)**

**PART 1: HEALTH PROFESSIONAL INFORMATION**

**SUMMARY PRODUCT INFORMATION**

**Table 1 – Product Information Summary**

<b>Route of Administration</b>	<b>Dosage Form, Strength</b>	<b>All Nonmedicinal Ingredients</b>
Oral	Tablets, 250mg, 500mg and 750mg	Colloidal Anhydrous Silica, Crospovidone, Hypromellose, Magnesium Stearate, Maize starch, Microcrystalline Cellulose, Pregelatinized starch, Polyethylene Glycol, Purified Talc, and Titanium Dioxide.

**INDICATIONS AND CLINICAL USE**

RIVA-CIPROFLOXACIN (ciprofloxacin tablet BP) may be indicated for the treatment of patients with the following infections caused by susceptible strains of the indicated microorganisms:

**Respiratory Tract Infections**

Acute exacerbation of chronic bronchitis caused by:

*Haemophilus influenzae*

*Moraxella catarrhalis*

Acute pneumonia caused by:

*Enterobacter cloacae*

*Escherichia coli*

*Haemophilus influenzae*

*Klebsiella pneumoniae*

*Proteus mirabilis*

*Pseudomonas aeruginosa*

*Staphylococcus aureus*

Acute sinusitis caused by:

*Haemophilus influenzae*

*Moraxella catarrhalis*

Due to the nature of the underlying conditions which usually predispose patients to *pseudomonas* infections of the respiratory tract, bacterial eradications may not be achieved in patients who display clinical improvement despite evidence of *in vitro* sensitivity. In patients requiring subsequent courses of therapy, RIVA-CIPROFLOXACIN should be used alternately with other antipseudomonal agents. Some strains of *Pseudomonas aeruginosa* may develop resistance during treatment. Therefore, susceptibility testing should be performed periodically during therapy to detect the emergence of bacterial resistance.

## **Urinary Tract Infections**

Upper and lower urinary tract infections, such as complicated and uncomplicated cystitis, pyelonephritis, and pyelitis caused by:

*Citrobacter diversus*  
*Citrobacter freundii*  
*Enterobacter cloacae*  
*Escherichia coli*  
*Klebsiella pneumoniae*  
*Klebsiella oxytoca*  
*Morganella morganii*  
*Proteus mirabilis*  
*Pseudomonas aeruginosa*  
*Serratia marcescens*  
*Staphylococcus aureus*  
*Staphylococcus epidermidis*  
*Staphylococcus saprophyticus*  
*Streptococcus faecalis*

Acute uncomplicated cystitis: in females caused by:

*Escherichia coli*

## **Chronic Bacterial Prostatitis**

Caused by:

*Escherichia coli*

## **Skin and Soft Tissue infections**

Caused by:

*Enterobacter cloacae*  
*Escherichia coli*  
*Klebsiella pneumoniae*  
*Proteus mirabilis*  
*Proteus vulgaris*  
*Pseudomonas aeruginosa*  
*Staphylococcus aureus*  
*Staphylococcus epidermidis*  
*Streptococcus pyogenes*

## **Bone and Joint infections**

Caused by:

*Enterobacter cloacae*  
*Pseudomonas aeruginosa*  
*Serratia marcescens*  
*Staphylococcus aureus*

### **Infectious Diarrhea** (when antibacterial therapy is indicated)

Caused by:

*Campylobacter jejuni*

*Escherichia coli* (enterotoxigenic strains)

*Shigella dysenteriae*

*Shigella flexneri*

*Shigella sonnei*

### **Meningococcal Carriers**

Treatment of asymptomatic carriers of *Neisseria meningitidis* to eliminate meningococci from the nasopharynx. A minimal inhibitory concentration (MIC) determination on the isolate from the index case should be performed as soon as possible. **Ciprofloxacin is not indicated for the treatment of meningococcal meningitis.**

### **Typhoid Fever (enteric fever)**

Caused by:

*Salmonella paratyphi*

*Salmonella typhi*

### **Uncomplicated Gonorrhea**

Cervical/urethral/rectal/pharyngeal infections caused by *Neisseria gonorrhoea*. Because co-infection with *Chlamydia trachomatis* is common, consideration should be given to treating presumptively with an additional regimen that is effective against *C. trachomatis*.

Appropriate culture and susceptibility tests should be performed prior to initiating treatment in order to isolate and identify organisms causing the infection and to determine their susceptibilities to ciprofloxacin. Therapy with RIVA-CIPROFLOXACIN may be initiated before results of these tests are known. However, modification of this treatment may be required once results become available or if there is no clinical improvement. Culture and susceptibility testing performed periodically during therapy will provide information on the possible emergence of bacterial resistance. If anaerobic organisms are suspected to be contributing to the infection, appropriate therapy should be administered.

### **Geriatrics:**

Elderly patients should receive a dose dependent on the severity of their illness and their creatinine clearance (see **DOSAGE AND ADMINISTRATION: Special Populations - Impaired Renal Function** for dose modification based on creatinine clearance or serum creatinine).

### **Pediatrics (<18 years of age):**

The safety and efficacy of RIVA-CIPROFLOXACIN in individuals less than 18 years of age has not been established. Ciprofloxacin is not recommended for children under the age of 18 years (see **WARNINGS AND PRECAUTIONS: Special Populations - Pediatrics (< 18 years of age)**).

## CONTRAINDICATIONS

- RIVA-CIPROFLOXACIN (ciprofloxacin tablet BP) is contraindicated in patients who have shown hypersensitivity to ciprofloxacin or other quinolone antibacterial agents or any of the excipients. For a complete listing, see the **DOSAGE FORMS, COMPOSITION AND PACKAGING** section.
- Concurrent administration of ciprofloxacin and tizanidine is contraindicated since it may result in an undesirable increase in serum tizanidine concentrations. This can be associated with clinically relevant tizanidine-induced side effects (hypotension, somnolence, drowsiness) (see **DRUG INTERACTIONS**).

## WARNINGS AND PRECAUTIONS

### Serious Warnings and Precautions

- Ciprofloxacin have been shown to prolong the QT interval of the electrocardiogram in some patients (see **WARNINGS AND PRECAUTIONS: Cardiovascular**).
- Serious hypersensitivity and/or anaphylactic reactions have been reported in patients receiving quinolone therapy, including ciprofloxacin (see **WARNINGS AND PRECAUTIONS: Immune**).
- Fluoroquinolones including ciprofloxacin are associated with an increased risk of tendinitis and tendon rupture in all ages. The risk is further increased in older patients usually over 60 years of age, in patients taking corticosteroid drugs, and in patients with kidney, heart or lung transplants (see **WARNINGS AND PRECAUTIONS: Musculoskeletal**).
- Fluoroquinolones including ciprofloxacin may exacerbate muscle weakness in persons with myasthenia gravis. Avoid using ciprofloxacin in patients with a known history of myasthenia gravis (see **WARNINGS AND PRECAUTIONS: Musculoskeletal**).
- Seizures and toxic psychoses may occur with quinolone therapy. Convulsions, increased intracranial pressure (including pseudotumor cerebri) and toxic psychoses have been reported in patients receiving quinolones, including ciprofloxacin. Ciprofloxacin should be used with caution in patients with known or suspected CNS disorders which may predispose them to seizures or lower the seizure threshold (see **WARNINGS AND PRECAUTIONS: Neurologic**).
- Cases of hepatic necrosis and life-threatening hepatic failure have been reported with ciprofloxacin (see **WARNINGS AND PRECAUTIONS: Hepatic/Biliary/Pancreatic**).

### General

Prolonged use of RIVA-CIPROFLOXACIN may result in the overgrowth of nonsusceptible organisms. Careful observation of the patient is therefore essential, and if superinfection should occur during therapy, appropriate measures should be taken.

Ciprofloxacin is not recommended for treatment of pneumococcal infections due to inadequate efficacy against *Streptococcus pneumoniae*.

## **Cardiovascular**

Ciprofloxacin have been shown to prolong the QT interval of the electrocardiogram in some patients. In general, elderly patients may be more susceptible to drug-associated effects on the QT interval. Precaution should be taken when using ciprofloxacin with concomitant drugs that can result in prolongation of the QT interval (eg, class IA or III antiarrhythmics) or in patients with risk factors for torsade de pointes (eg, known QT prolongation, uncorrected hypokalemia) (see **DRUG INTERACTIONS** and **ADVERSE REACTIONS**).

## **Endocrine and Metabolism**

### **Disturbances of Blood Glucose**

Disturbances of blood glucose, including symptomatic hyper- and hypoglycemia, have been reported with the use of quinolones, including ciprofloxacin (see **ADVERSE REACTIONS**).

## **Gastrointestinal**

### **Clostridium difficile-associated disease**

*Clostridium difficile*-associated disease (CDAD) has been reported with the use of many antibacterial agents, including ciprofloxacin. CDAD may range in severity from mild diarrhea to fatal colitis. It is important to consider this diagnosis in patients who present with diarrhea or symptoms of colitis, pseudomembranous colitis, toxic megacolon, or perforation of the colon subsequent to the administration of any antibacterial agent. CDAD has been reported to occur over 2 months after the administration of antibacterial agents.

Treatment with antibacterial agents may alter the normal flora of the colon and many permit overgrowth of *Clostridium difficile*. *C. difficile* produces toxins A and B, which contribute to the development of CDAD. CDAD may cause significant morbidity and mortality. CDAD can be refractory to antimicrobial therapy.

If the diagnosis of CDAD is suspected or confirmed, appropriate therapeutic measures should be initiated. Mild cases of CDAD usually respond to discontinuation of antibacterial agents not directed against *Clostridium difficile*. In moderate to severe cases, consideration should be given to management with fluids and electrolytes, protein supplementation, and treatment with an antibacterial agent clinically effective against *Clostridium difficile*. Drugs that inhibit peristalsis may delay clearance of *Clostridium difficile* and its toxins, and therefore should not be used in the treatment of CDAD. Surgical evaluation should be instituted as clinically indicated since surgical intervention may be required in certain severe cases (see **ADVERSE REACTIONS**).

## **Hepatic/Biliary/Pancreatic**

Cases of hepatic necrosis and life-threatening hepatic failure have been reported with ciprofloxacin. In the event of any signs and symptoms of hepatic disease (such as anorexia, jaundice, dark urine, pruritus, or tender abdomen), treatment should be discontinued (see **ADVERSE REACTIONS**).

There can be an increase in transaminases, alkaline phosphatase, or cholestatic jaundice, especially in patients with previous liver damage, who are treated with ciprofloxacin (see **ADVERSE REACTIONS**).

## **Immune**

Serious hypersensitivity and/or anaphylactic reactions have been reported in patients receiving quinolone therapy, including ciprofloxacin. These reactions may occur within the first 30 minutes following the first dose and may require epinephrine and other emergency measures. Some reactions have been accompanied by cardiovascular collapse, hypotension/shock, seizure, loss of consciousness, tingling, angioedema (including tongue, laryngeal, throat or facial edema/swelling), airway obstruction (including bronchospasm, shortness of breath and acute respiratory distress), dyspnea, urticaria, itching and other serious skin reactions.

Ciprofloxacin should be discontinued at the first appearance of a skin rash or any other sign of hypersensitivity. Serious acute hypersensitivity reactions may require treatment with epinephrine and other resuscitative measures, including oxygen, intravenous fluids, antihistamines, corticosteroids, pressor amines and airway management, as clinically indicated.

Serious and sometimes fatal events, some due to hypersensitivity and some due to uncertain etiology, have been reported in patients receiving therapy with all antibiotics. These events may be severe and generally occur following the administration of multiple doses. Clinical manifestations may include one or more of the following: fever, rash or severe dermatologic reactions (e.g., toxic epidermal necrolysis, Stevens-Johnson Syndrome), vasculitis, arthralgia, myalgia, serum sickness, allergic pneumonitis, interstitial nephritis, acute renal insufficiency or failure, hepatitis, jaundice, acute hepatic necrosis or failure, hepatic necrosis with fatal outcome, anemia including hemolytic and aplastic, thrombocytopenia including thrombotic thrombocytopenic purpura, leukopenia, agranulocytosis, pancytopenia, and/or other hematologic abnormalities.

## **Musculoskeletal**

### ***Myasthenia Gravis***

Fluoroquinolones, including ciprofloxacin, have neuromuscular blocking activity and may exacerbate muscle weakness in persons with myasthenia gravis. Postmarketing serious adverse events, including deaths and requirement for ventilatory support, have been associated with fluoroquinolone use in persons with myasthenia gravis. Avoid ciprofloxacin in patients with a known history of myasthenia gravis (see **ADVERSE REACTIONS**).

### ***Tendinitis***

Rupture of the shoulder, hand and Achilles tendons that required surgical repair or resulted in prolonged disability have been reported in patients receiving quinolones, including ciprofloxacin. RIVA-CIPROFLOXACIN should be discontinued if the patient experiences pain, inflammation, or rupture of a tendon. Patients should rest and refrain from exercise until the diagnosis of tendinitis or tendon rupture has been confidently excluded. The risk of developing fluoroquinolone associated tendinitis and tendon rupture is further increased in older patients usually over 60 years of age, in patients taking corticosteroid drugs, and in patients with kidney, heart, or lung transplants. Factors, in addition to age and corticosteroid use, that may independently increase the risk of tendon rupture include strenuous physical activity, renal failure, and previous tendon disorders such as rheumatoid arthritis. Tendinitis and tendon rupture have also occurred in patients taking fluoroquinolones who do not have the above risk factors. Tendon rupture can occur during or after completion of therapy; cases occurring up to several months after completion of therapy have been reported. RIVA-CIPROFLOXACIN should be



discontinued if the patient experiences pain, swelling, inflammation, or rupture of a tendon. Patients should be advised to rest at the first sign of tendinitis or tendon rupture, and to contact their healthcare provider regarding changing to a non-quinolone antimicrobial drug.

RIVA-CIPROFLOXACIN should not be used in patients with a history of tendon disease/disorder related to previous quinolone treatment.

### **Neurologic**

Seizures and toxic psychoses may occur with quinolone therapy. Convulsions, increased intracranial pressure (including pseudotumor cerebri), and toxic psychoses have been reported in patients receiving quinolones, including ciprofloxacin. Cases of status epilepticus have also been reported. Ciprofloxacin may also cause central nervous system (CNS) stimulation which may lead to dizziness, tremors, restlessness, lightheadedness, confusion, hallucinations, depression, nervousness, agitation, insomnia, anxiety, paranoia, nightmares and rarely, suicidal thoughts or acts. In some cases, depression or psychotic reactions can progress to suicidal ideations/thoughts and self-injurious behavior, such as attempted suicide or completed suicide. These reactions may occur even following the first dose of ciprofloxacin. If any of these reactions occur in patients receiving ciprofloxacin, the drug should be discontinued and appropriate measures instituted. Ciprofloxacin should be used with caution in patients with known or suspected CNS disorders which may predispose to seizures or lower the seizure threshold (eg, severe cerebral arteriosclerosis, epilepsy), or in the presence of other risk factors that may predispose to seizures or lower the seizure threshold (eg, certain drug therapy, renal dysfunction) (see **ADVERSE REACTIONS**).

### ***Peripheral Neuropathy***

Cases of sensory or sensorimotor axonal polyneuropathy affecting small and/or large axons resulting in paresthesias, hypoesthesias, dysesthesias and/or weakness have been reported in patients receiving quinolones, including ciprofloxacin.

Ciprofloxacin should be discontinued if the patient experiences symptoms of neuropathy including pain, burning, tingling, numbness, and/or weakness, or is found to have deficits in light touch, pain, temperature, position sense, vibratory sensation, and/or motor strength in order to prevent the development of an irreversible condition (see **ADVERSE REACTIONS**).

### **Renal**

Crystalluria related to ciprofloxacin has been reported only rarely in man because human urine is usually acidic. Crystals have been observed in the urine of laboratory animals, usually from alkaline urine. Patients receiving ciprofloxacin should be well hydrated and alkalinity of the urine should be avoided. The recommended daily dose should not be exceeded.

Since ciprofloxacin is eliminated primarily by the kidney, RIVA-CIPROFLOXACIN should be used with caution and at a reduced dosage in patients with impaired renal function. (See **DOSAGE AND ADMINISTRATION, HUMAN PHARMACOLOGY**)

## **Skin**

### ***Phototoxicity***

Ciprofloxacin has been shown to produce photosensitivity reactions. Moderate to severe phototoxicity reactions have been observed in patients exposed to direct sunlight or ultraviolet light while receiving drugs in this class. Excessive exposure to sunlight or ultraviolet light should be avoided. Therapy should be discontinued if phototoxicity occurs (eg, sunburn-like skin reactions).

## **Vision Disorders**

If vision disorder occurs in association with the use of RIVA-CIPROFLOXACIN, consult an eye specialist immediately.

## **Special Populations**

### ***Pregnant Women***

The safety of ciprofloxacin in pregnancy has not yet been established. RIVA-CIPROFLOXACIN should not be used in pregnant women unless the likely benefits outweigh the possible risk to the fetus. Ciprofloxacin have been shown to be non-embryotoxic and non-teratogenic in animal studies.

### ***Nursing Women***

The safety of ciprofloxacin in nursing women has not been established. Ciprofloxacin is excreted in human milk. Because of the potential for serious adverse reactions in infants nursing from women taking ciprofloxacin a decision should be made to discontinue nursing or to discontinue the administration of ciprofloxacin, taking into account the importance of the drug to the mother and the possible risk to the infant.

### ***Pediatrics (<18 years of age)***

The safety and efficacy of ciprofloxacin in the pediatric population less than 18 years of age have not been established. Quinolones, including ciprofloxacin, cause arthropathy and osteochondrosis in juvenile animals of several species. Damage to juvenile weight-bearing joints and lameness were observed both in rat and dog studies but not in weaned piglets (see **TOXICOLOGY**). Histopathological examination of the weight-bearing joints in immature dogs revealed permanent lesions of the cartilage. Ciprofloxacin is not recommended for use in pediatric patients and adolescents.

### ***Geriatrics***

Ciprofloxacin is substantially excreted by the kidney, and the risk of adverse reactions may be greater in elderly patients with impaired renal function. (See **DETAILED PHARMACOLOGY: Human Pharmacology**).

## **Monitoring and Laboratory Tests**

Ciprofloxacin in vitro potency may interfere with the *Mycobacterium spp.* culture test by suppression of mycobacterial growth, causing false negative results in specimens from patients currently taking ciprofloxacin.

## ADVERSE REACTIONS

### Adverse Drug Reaction Overview

The following sections summarize the safety information derived from clinical trials and postmarket use of ciprofloxacin.

### Clinical Trial Adverse Drug Reactions

*Because clinical trials are conducted under very specific conditions the adverse reaction rates observed in the clinical trials may not reflect the rates observed in practice and should not be compared to the rates in the clinical trials of another drug. Adverse drug reaction information from clinical trials is useful for identifying drug-related adverse events and for approximating rates.*

Ciprofloxacin tablets (ciprofloxacin tablet BP) are generally well tolerated. During worldwide clinical investigation (1991), 16 580 courses of ciprofloxacin treatment were evaluated for drug safety.

The incidence of adverse reactions was 8.0%. In orally treated patients enrolled in clinical trials, the most frequently reported events, possibly, probably drug-related were: nausea (1.3%), and diarrhea (1.0%).

Most of the adverse events reported were described as only mild or moderate in severity.

**Events possibly or probably drug-related occurring at a frequency of less than 1% with ciprofloxacin treatment during clinical trials and subsequent post-marketing surveillance are as follows:**

**Body as a Whole:** back pain, chest pain, pain, pain in extremities, moniliasis.

**Cardiovascular System:** palpitation, phlebitis, tachycardia, thrombophlebitis. The following has been reported rarely ( $\geq 0.01\%$  -  $< 0.1\%$ ): hypotension. The following have been reported very rarely ( $< 0.01\%$ ): angina pectoris, atrial fibrillation, cardiac arrest, cerebrovascular disorder, electrocardiogram abnormality, hot flashes, hypertension, kidney vasculitis, myocardial infarct, pericarditis, pulmonary embolus, substernal chest pain, syncope (fainting), vasodilation (hot flashes).

**Digestive:** abdominal pain, decreased appetite and food intake, dry mouth, dyspepsia, dysphagia, enlarged abdomen, flatulence, gastrointestinal moniliasis, jaundice, stomatitis, vomiting, abnormal liver function test. The following have been reported rarely: moniliasis (oral), cholestatic jaundice and pseudomembranous colitis. The following have been reported very rarely: constipation, esophagitis, gastrointestinal hemorrhage, glossitis, hepatomegaly, ileus, increased appetite, intestinal perforation, life-threatening pseudomembranous colitis with possible fatal outcome, liver damage, melena, pancreatitis, tenesmus, tooth discoloration, toxic megacolon, ulcerative stomatitis.

**Hemic and Lymphatic:** agranulocytosis, anaemia, eosinophilia, granulocytopenia, leukocytopenia, leukocytosis, pancytopenia. The following have been reported rarely: abnormal prothrombin level, thrombocytopenia, thrombocytosis. The following have been reported very

rarely: haemolytic anaemia, bone marrow depression (life threatening), pancytopenia (life threatening)

**Hypersensitivity:** rash. The following have been reported rarely: allergic reaction, anaphylactic/anaphylactoid reactions including facial, vascular and laryngeal edema, drug fever, haemorrhagic bullae and small nodules (papules) with crust formation showing vascular involvement (vasculitis), hepatitis; interstitial nephritis, petechiae (punctuate skin hemorrhages), pruritus, serum sickness-like reaction, Stevens-Johnson syndrome (potentially life-threatening) (see **WARNINGS AND PRECAUTIONS: Immune**). The following have been reported very rarely: shock (anaphylactic: life-threatening), pruritic rash, erythema multiforme (minor), erythema nodosum, major liver disorders including hepatic necrosis, (very rarely progressing to life threatening hepatic failures), toxic epidermal necrolysis (Lyell Syndrome, potentially life-threatening).

**Metabolic and Nutritional Disorder:** creatinine increased. The following have been reported rarely: edema (face), hyperglycemia, hypoglycemia.

**Musculoskeletal:** The following have been reported rarely in patients of all ages: achiness, arthralgia (joint pain), joint disorder (joint swelling), pain in the extremities, partial or completed tendon rupture (shoulder, hand or Achilles tendon), tendinitis (predominantly achillotendinitis), myalgia (muscular pain). The following have been reported very rarely: myasthenia (exacerbation of symptoms of myasthenia gravis). (see **WARNINGS AND PRECAUTIONS: Musculoskeletal**).

**Nervous System:** agitation, confusion, convulsion, dizziness, hallucinations, headache, hypesthesia, increased sweating, insomnia, somnolence, tremor (trembling). The following has been reported rarely: paresthesia (peripheral paralgesia), abnormal dreams (nightmares), anxiety, seizures (including status epilepticus), depression (potentially culminating in self-injurious behavior, such as suicidal ideations/thoughts and attempted or completed suicide) (see **WARNINGS AND PRECAUTIONS: Neurologic**). The following have been reported very rarely: apathy, ataxia, depersonalization, diplopia, hemiplegia, hyperesthesia, hypertonia, increase of intracranial pressure, meningism, migraine, nervousness, neuritis, paresthesia, polyneuritis, sleep disorder, twitching, grand mal convulsions, abnormal (unsteady) gait, psychotic reactions (potentially culminating in self-injurious behavior, such as suicidal ideations / thoughts and attempted or completed suicide), intracranial hypertension (including pseudotumor cerebri). In some instances these reactions occurred after the first administration of ciprofloxacin. In these instances, ciprofloxacin has to be discontinued and the doctor should be informed immediately.

**Other:** The following have been reported rarely: asthenia (general feeling of weakness, tiredness), death.

**Respiratory System:** dyspnea. The following have been reported very rarely: hiccup, hyperventilation, increased cough, larynx edema, lung edema, lung hemorrhage, pharyngitis, stridor, voice alteration.

**Skin/Appendages:** pruritus, urticaria, rash, maculopapular rash. The following has been reported rarely: photosensitivity reaction, blistering. The following have been reported very rarely: alopecia, angioedema, fixed eruption, photosensitive dermatitis, petechia.

**Special Senses:** abnormal vision (visual disturbances), taste perversion, tinnitus. The following have been reported rarely: transitory deafness (especially at higher frequencies), taste loss (impaired taste). The following have been reported very rarely: chromatopsia, colour blindness, conjunctivitis, corneal opacity, diplopia, ear pain, eye pain, parosmia (impaired smell), anosmia (usually reversible on discontinuation).

**Urogenital System:** albuminuria, hematuria. The following have been reported rarely: abnormal kidney function, acute kidney failure, dysuria, leukorrhea, nephritis interstitial, urinary retention, vaginitis, vaginal moniliasis.

### **Abnormal Hematologic and Clinical Chemistry Findings**

**Laboratory Values:** increased alkaline phosphatase, ALT increased, AST increased, BUN (urea) increased, cholestatic parameters increased, Gamma - GT increased, lactic dehydrogenase increased, NPN increased, transaminases increased, decreased albuminuria, bilirubinemia, creatinine clearance decreased, hypercholesteremia, hyperuricemia, increased sedimentation rate. The following have been reported rarely: acidosis, increased amylase, crystalluria, electrolyte abnormality, haematuria, hypercalcemia, hypocalcemia and lipase increased.

### **Post-Market Adverse Drug Reactions**

The following additional adverse events, in alphabetical order, regardless of incidence or relationship to drug, have been reported during clinical trials and/or from worldwide postmarketing experience in patients given ciprofloxacin (includes all formulations, all dosages, all drug-therapy durations, and in all indications): acute generalized exanthematous pustulosis (AGEP), arrhythmia, atrial flutter, bleeding diathesis, bronchospasm, *C. difficile* associated diarrhea, candiduria, cardiac murmur, cardiopulmonary arrest, cardiovascular collapse, cerebral thrombosis, chills, delirium, drowsiness, dysphasia, edema (conjunctivae, hands, lips, lower extremities, neck), epistaxis, exfoliative dermatitis, fever, gastrointestinal bleeding, gout (flare up), gynecomastia, hearing loss, hemoptysis, hemorrhagic cystitis, hyperpigmentation, joint stiffness, lightheadedness, lymphadenopathy, manic reaction, myoclonus, nystagmus, pain (arm, breast, epigastric, foot, jaw, neck, oral mucosa), paranoia, peripheral neuropathy phobia, pleural effusion, polyneuropathy, polyuria, postural hypotension, pulmonary embolism, purpura, QT prolongation, renal calculi, respiratory arrest, respiratory distress, restlessness, rhabdomyolysis, torsades de pointes, toxic psychosis, unresponsiveness, urethral bleeding, urination (frequent), ventricular ectopy, ventricular fibrillation, ventricular tachycardia, vesicles, visual acuity (decreased) and visual disturbances (flashing lights, change in colour perception, overbrightness of lights).

The following has been reported at an unknown frequency: international normalized ratio (INR) increased (in patients treated with Vitamin K antagonists).

## **DRUG INTERACTIONS**

### **Overview**

**SERIOUS AND FATAL REACTIONS HAVE BEEN REPORTED IN PATIENTS RECEIVING CONCURRENT ADMINISTRATION OF CIPROFLOXACIN AND THEOPHYLLINE.** These reactions include cardiac arrest, seizure, status epilepticus and respiratory failure. Similar serious adverse events have been reported in patients receiving

theophylline alone; the possibility that ciprofloxacin may potentiate these reactions cannot be eliminated. If concomitant use cannot be avoided, serum levels of theophylline should be monitored and dosage adjustments should be made as appropriate.

### ***Cytochrome P<sub>450</sub>***

Ciprofloxacin is known to be a moderate inhibitor of the CYP450 1A2 enzymes. Care should be taken when other drugs are administered concomitantly which are metabolized via the same enzymatic pathway (e.g., theophylline, methylxanthines, caffeine, duloxetine, clozapine). Increased plasma concentrations associated with drug specific side effects may be observed due to inhibition of their metabolic clearance by ciprofloxacin.

### **Drug-Drug Interactions**

*The drugs listed in this table are based on either drug interaction case reports or studies, or potential interactions due to the expected magnitude and seriousness of the interaction (ie, those identified as contraindicated).*

**Table 2 – Established or Potential Drug-drug Interactions**

<b>Proper Name</b>	<b>Ref</b>	<b>Effect</b>	<b>Clinical Comment</b>
Antidiabetic Agents	C	Disturbances of blood glucose, including symptomatic hyperglycemia and hypoglycemia, have been reported with quinolones, including ciprofloxacin, usually in diabetic patients receiving concomitant treatment with an oral antidiabetic agent (mainly sulfonylureas such as glyburide/glibenclamide, glimepiride) or with insulin.	In diabetic patients, careful monitoring of blood glucose is recommended. If a hypoglycemic reaction occurs in a patient receiving ciprofloxacin, discontinue the drug immediately and an appropriate therapy should be instituted (see <b>ADVERSE REACTIONS</b> ).
Caffeine and Other Xanthine Derivatives	CT	Caffeine has been shown to interfere with the metabolism and pharmacokinetics of ciprofloxacin. Excessive caffeine intake should be avoided. Ciprofloxacin decreases caffeine clearance and inhibits the formation of paraxanthine after caffeine administration.  Upon concurrent administration of ciprofloxacin and pentoxifylline (oxpentifylline)-containing products, raised serum concentrations of this xanthine derivative were reported.	Caution and careful monitoring of patients on concomitant therapy of ciprofloxacin and caffeine or pentoxifylline (oxpentifylline) containing products is recommended
Class IA or III Antiarrhythmics	C	Ciprofloxacin may have an additive effect on the QT interval (see <b>WARNINGS AND PRECAUTIONS</b> ).	Like other fluoroquinolones, precaution should be taken when using ciprofloxacin together with class IA (eg, quinidine, procainamide) or III (eg, amiodarone, sotalol) antiarrhythmics.
Clozapine	C	Following concomitant administration of 250 mg ciprofloxacin for 7 days, serum concentrations of clozapine and ndesmethylclozapine were increased by 29% and 31%, respectively (see <b>WARNINGS AND PRECAUTIONS</b> ).	Clinical surveillance and appropriate adjustment of clozapine dosage during and shortly after coadministration with ciprofloxacin is advised.
Cyclosporine	CT	Some quinolones, including ciprofloxacin, have	It is necessary to monitor the

Proper Name	Ref	Effect	Clinical Comment
		been associated with transient increases in serum creatinine levels in patients who are concomitantly receiving cyclosporine.	serum creatinine concentrations in these patients (twice a week).
Duloxetine	C	In clinical studies it was demonstrated that concomitant use of duloxetine with strong inhibitors of the CYP450 1A2 isozyme such as fluvoxamine, may result in an increase of AUC and C <sub>max</sub> of duloxetine. Although no clinical data are available on a possible interaction with ciprofloxacin, similar effects can be expected upon concomitant administration.	Caution and careful monitoring of patients on concomitant therapy is recommended.
Ferrous Sulfate	CT	Oral ferrous sulfate at therapeutic doses decreases the bioavailability of oral ciprofloxacin.	Ciprofloxacin should be administered at least 2 hours before or 6 hours after this preparation.
Calcium-Fortified Products (including Food and Dairy Products)	CT	Although, ciprofloxacin may be taken with meals that include milk, simultaneous administration with dairy products, alone, or with calcium-fortified products should be avoided, since decreased absorption is possible.	It is recommended that ciprofloxacin be administered at least 2 hours before or 6 hours after substantial calcium intake (>800 mg) (see <b>DOSAGE AND ADMINISTRATION</b> ).
Histamine H <sub>2</sub> -receptor Antagonists	CT	Histamine H <sub>2</sub> -receptor antagonists appear to have no significant effect on the bioavailability of ciprofloxacin.	No dosage adjustment is required.
Lidocaine	CT	It was demonstrated in healthy subjects that concomitant use of lidocaine with ciprofloxacin, a moderate inhibitor of CYP450 1A2 isozyme, reduces clearance of intravenous lidocaine by 22%. Ciprofloxacin may increase the systemic toxicity of lidocaine.	Caution and careful monitoring of patients on concomitant therapy is recommended.
Methotrexate	C	Renal tubular transport of methotrexate may be inhibited by concomitant administration of ciprofloxacin, potentially leading to increased plasma levels of methotrexate. This might increase the risk of methotrexate associated toxic reactions.	Patients under methotrexate therapy should be carefully monitored when concomitant ciprofloxacin therapy is indicated.
Metoclopramide	CT	Metoclopramide accelerates the absorption of ciprofloxacin (oral), resulting in a shorter time to reach maximum plasma concentrations. No effect was seen on the bioavailability of ciprofloxacin.	No dosage adjustment required.
Multivalent Cations	CT	Concurrent administration of a quinolone, including ciprofloxacin, with multivalent cation-containing products such as magnesium/aluminum antacids, polymeric phosphate binders such as sevelamer, lanthanum carbonate, sucralfate, VIDEX® (didanosine) chewable/buffered tablets or pediatric powder, mineral supplements or products containing calcium, iron, or zinc may substantially interfere with the absorption of the quinolone, resulting in serum and urine levels considerably lower than desired.  Absorption of ciprofloxacin is significantly reduced by concomitant administration of	Ciprofloxacin should be administered at least 2 hours before or 6 hours after these preparations.

Proper Name	Ref	Effect	Clinical Comment
		multivalent cation containing products.	
Nonsteroidal Anti-Inflammatory Drugs (NSAIDs)	CT	Concomitant administration of a nonsteroidal anti-inflammatory drug (fenbuten) with a quinolone (enoxacin) has been reported to increase the risk of CNS stimulation and convulsive seizures.	Caution and careful monitoring of patients on concomitant therapy is recommended.
Omeprazole	CT	Concomitant administration of ciprofloxacin and omeprazole containing medicinal products results in a slight reduction of C <sub>max</sub> and AUC of ciprofloxacin.	No dosage adjustment needed
Oral Anticoagulants	CT	Simultaneous administration of ciprofloxacin with an oral anticoagulant (eg, vitamin K antagonist) may augment its anticoagulant effects. There have been many reports of increases in oral anticoagulant activity in patients receiving antibacterial agents, including quinolones. The risk may vary with the underlying infection, age, and general status of the patient so that the contribution of ciprofloxacin to the increase in INR (international normalized ratio) is difficult to assess.	INR and/or prothrombin time should be monitored frequently during and shortly after co-administration of ciprofloxacin with an oral anticoagulant (eg, warfarin, acenocoumarol).
Phenytoin	CT	Altered (decreased or increased) serum levels of phenytoin were observed in patients receiving ciprofloxacin and phenytoin simultaneously.	Monitoring of phenytoin therapy is recommended, including phenytoin serum concentration measurements, during and shortly after coadministration of ciprofloxacin with phenytoin to avoid the loss of seizure control associated with decreased phenytoin levels and to prevent phenytoin overdose-related undesirable effects.
Probenecid	CT	Probenecid blocks renal tubular secretion of ciprofloxacin and has been shown to produce an increase in the level of ciprofloxacin in the serum.  Co-administration of probenecid (1000 mg) with ciprofloxacin (500 mg) orally resulted in about 50% reduction in the ciprofloxacin renal clearance and a 50% increase in its concentration in the systemic circulation.	Caution and careful monitoring of patients on concomitant therapy is recommended.
Ropinirole	CT	In a clinical study it was shown that concomitant use of ropinirole with ciprofloxacin, a moderate inhibitor of the CYP450 1A2 isozyme, resulted in increases in the C <sub>max</sub> and AUC of ropinirole of 60% and 84%, respectively. Ciprofloxacin may increase the systemic toxicity of ropinirole.	Monitoring ropinirole related undesirable effects, dose adjustment as appropriate is recommended during and shortly after coadministration with ciprofloxacin
Sildenafil	CT	C <sub>max</sub> and AUC of sildenafil were increased approximately two-fold in healthy subjects after an oral dose of 50 mg was given concomitantly with 500 mg ciprofloxacin.	Caution should be used when prescribing ciprofloxacin concomitantly with sildenafil, taking into consideration the risks and the benefits.
Theophylline	CT	Concurrent administration of ciprofloxacin with theophylline may lead to elevated serum	If concomitant use cannot be avoided, serum levels of



Proper Name	Ref	Effect	Clinical Comment
		<p>concentrations of theophylline and prolongation of its elimination half-life. This may result in increased risk of theophylline-related adverse reactions.</p> <p>Studies with immediate-release ciprofloxacin have shown that concomitant administration of ciprofloxacin with theophylline decreases the clearance of theophylline, resulting in elevated serum theophylline levels and increased risk of a patient developing CNS or other adverse reactions.</p>	theophylline should be monitored and dosage adjustments made as appropriate.
Tizanidine	CT	In a clinical study in healthy subjects there was an increase in tizanidine serum concentrations ( $C_{max}$ increase: 7-fold, range: 4- to 21-fold; AUC increase: 10-fold, range: 6- to 24- fold) when given concomitantly with ciprofloxacin. Associated with the increased serum concentrations was a potentiated hypotensive and sedative effect.	Tizanidine must not be administered together with ciprofloxacin (see <b>CONTRAINDICATIONS</b> ).

Legend: C=Case Study; CT=Clinical Trial; T= Theoretical

### ***Serum Protein Binding***

Serum protein binding of ciprofloxacin is between 19% to 40%, which is not likely to be high enough to cause significant protein binding interactions with other drugs.

### **Drug-Food Interactions:**

Although ciprofloxacin may be taken with meals that include milk, simultaneous administration with dairy products alone (calcium intake >800 mg), with calcium-fortified products, or mineral fortified drinks, should be avoided since decreased absorption is possible. It is recommended that ciprofloxacin be administered at least 2 hours before or 6 hours after these preparations (see **DRUG INTERACTIONS, Drug-Drug Interactions, and DOSAGE AND ADMINISTRATION, Dosing Considerations**).

### **Drug-Herb Interactions:**

Interactions with herbal products have not been established.

### **Drug-Laboratory Test Interactions:**

Ciprofloxacin in vitro potency may interfere with the *Mycobacterium spp.* culture test by suppression of mycobacterial growth, causing false negative results in specimens from patients currently taking ciprofloxacin.

### **Drug-Lifestyle Interactions**

#### ***Ability to Drive and Operate Machinery***

Fluoroquinolones including ciprofloxacin may result in an impairment of the patient's ability to drive or operate machinery due to CNS reactions. This applies particularly in combination with alcohol (see **ADVERSE REACTIONS**).

## DOSAGE AND ADMINISTRATION

### Dosing Considerations

The determination of dosage for any particular patient must take into consideration the severity and nature of the infection, the susceptibility of the causative organism, the integrity of the patient's host-defence mechanisms, and the status of renal function.

RIVA-CIPROFLOXACIN (ciprofloxacin tablet BP) may be taken before or after meals. Absorption is faster on an empty stomach. Patients should be advised to drink fluids liberally and avoid taking dairy products or antacids containing magnesium or aluminum.

Ciprofloxacin should be administered at least 2 hours before or 6 hours after antacids and mineral supplements containing magnesium or aluminum, as well as sucralfate, Videx<sup>®</sup> (didanosine) chewable/buffered tablets or pediatric powder, metal cations such as iron and multivitamin preparations with zinc. (see **Drug Interactions**)

Although RIVA-CIPROFLOXACIN may be taken with meals that include milk, simultaneous administration with dairy products alone, or with calcium-fortified products should be avoided, since decreased absorption is possible. It is recommended that RIVA-CIPROFLOXACIN be administered at least 2 hours before or 6 hours after substantial calcium intake (>800 mg) (see **Drug Interactions**)

### Recommended Dose and Dosage Adjustment

#### *Adults*

The recommended dosages of RIVA-CIPROFLOXACIN are:

**Table 3: Recommended Dosages for Oral Ciprofloxacin**

Location of Infection	Type/Severity	Unit Dose	Frequency	Daily Dose
Urinary Tract	Mild/Moderate	250 mg	q 12h	500 mg
	Severe/Complicated	500 mg	q 12h	1000 mg
Chronic Bacterial Prostatitis	Asymptomatic/Mild/ Moderate	500 mg	q 12h	1000 mg
Respiratory Tract	Mild/Moderate	500 mg	q 12h	1000 mg
Bone & Joint Skin & Soft Tissue	Severe*/Complicated	750 mg	q 12h	1500 mg
Infectious Diarrhea	Mild/Moderate/Severe	500 mg	q 12h	1000 mg
Urogenital and Extragenital Gonorrhea	Uncomplicated	500 mg	once	500 mg
Typhoid Fever	Mild/Moderate	500 mg	q 12h	1000 mg
<i>Neisseria meningitidis</i> Nasopharyngeal Colonization	Carrier State	750 mg	once	750 mg
Acute Sinusitis	Moderate	500 mg	q12h	1000 mg

\* e.g., hospital-acquired pneumonia, osteomyelitis

Depending on the severity of the infections, as well as the clinical and bacteriological responses, the average treatment period should be approximately 7 to 14 days. Generally, treatment should last 3 days beyond the disappearance of clinical symptoms or until cultures are sterile. Patients with osteomyelitis may require treatment for a minimum of 6 to 8 weeks and up to 3 months. With acute cystitis in females a 3 to 5 day treatment may be sufficient. With infectious diarrhea a five-day treatment may be sufficient. Typhoid fever should be treated for 14 days. Acute sinusitis should be treated for 10 days with 500 mg q 12h. Chronic bacterial prostatitis should be treated for 28 days with 500 mg q 12h.

## **Special Populations**

### ***Impaired Renal Function***

Ciprofloxacin is eliminated primarily by renal excretion. However, the drug is also metabolized and partially cleared through the biliary system of the liver and through the intestine (see **DETAILED PHARMACOLOGY: Human Pharmacology**). This alternate pathway of drug elimination appears to compensate for the reduced renal excretion of patients with renal impairment. Nonetheless, some modification of dosage is recommended, particularly for patients with severe renal dysfunction. The following table provides a guideline for dosage adjustment of ciprofloxacin. However, monitoring of serum drug levels provides the most reliable basis for dosage adjustments.

**Table 4: Maximum Daily Oral Dose with Stated Creatinine Clearance or Serum Creatinine**

Creatinine Clearance mL/min/1.73m <sup>2</sup>	Maximum Daily Oral Dose	Serum Creatinine Concentration mg/100mL
31-60	1000mg	1.4-1.9
≤30	500mg	≥2.0

Maximum daily doses, are not to be exceeded when either creatinine clearance or serum creatinine are in the ranges stated.

### ***Hemodialysis***

Only a small amount of ciprofloxacin (<10%) is removed from the body after hemodialysis or peritoneal dialysis. For hemodialysis patients, please follow dosing recommendations as described in Table 4. On dialysis days, the dose should be administered after dialysis.

When only the serum creatinine concentration is available, the following formula (based on sex, weight and age of the patient) may be used to convert this value into creatinine clearance. The serum creatinine should represent a steady state of renal function:

Creatinine Clearance mL/sec =

Males:  $\frac{\text{Weight (kg)} \times (140 - \text{age})}{49 \times \text{serum creatinine } (\mu\text{mol/L})}$

Females: 0.85 x the above value

In traditional units mL/min =

Males:  $\frac{\text{Weight (kg)} \times (140 - \text{age})}{72 \times \text{serum creatinine (mg/100 mL)}}$

Females: 0.85 x the above value

### **Impaired Hepatic Function**

No dosage adjustment is required.

### **Pediatric Use**

The safety and efficacy of ciprofloxacin tablets (ciprofloxacin hydrochloride) in individuals less than 18 years of age has not been established. RIVA-CIPROFLOXACIN is not recommended for use in pediatric patients and adolescents (see **WARNINGS AND PRECAUTIONS: Special Populations: Pediatrics (<18 years of age)**)

## **OVERDOSAGE**

For management of a suspected drug overdose, contact your regional Poison Control Centre immediately.

In the event of acute, excessive oral overdose, reversible renal toxicity, arthralgia, myalgia and CNS symptoms have been reported. Therefore, apart from routine emergency measures, it is recommended to monitor renal function and to administer magnesium- or calcium-containing antacids which reduce the absorption of ciprofloxacin and to maintain adequate hydration. Based on information obtained from subjects with chronic renal failure, only a small amount of ciprofloxacin (< 10%) is removed from the body after hemodialysis or peritoneal dialysis.

The administration of activated charcoal as soon as possible after oral overdose may prevent excessive increase of systemic ciprofloxacin exposure.

## **ACTION AND CLINICAL PHARMACOLOGY**

### **Mechanism of Action**

Ciprofloxacin, a synthetic fluoroquinolone, has *in vitro* activity against a wide range of gram-negative and gram-positive microorganisms. Its bactericidal action is achieved through inhibition of topoisomerase II (DNA gyrase) and topoisomerase IV (both Type II topoisomerases), which are required for bacterial DNA replication, transcription, repair, and recombination.

Ciprofloxacin retained some of its bactericidal activity after inhibition of RNA and protein synthesis by rifampin and chloramphenicol, respectively. These observations suggest ciprofloxacin may possess two bactericidal mechanisms, one mechanism resulting from the inhibition of DNA gyrase and a second mechanism which may be independent of RNA and protein synthesis.

The mechanism of action of fluoroquinolones, including ciprofloxacin, is different from that of

penicillins, cephalosporins, aminoglycosides, macrolides, and tetracyclines. Therefore, microorganisms resistant to these classes of drugs may be susceptible to ciprofloxacin. Conversely, microorganisms resistant to fluoroquinolones may be susceptible to these other classes of antimicrobial agents, (see **PART II-SCIENTIFIC INFORMATION-MICROBIOLOGY**) There is no cross-resistance between ciprofloxacin and the mentioned classes of antibiotics.

### **Pharmacokinetics**

(See **DETAILED PHARMACOLOGY: Human Pharmacology**)

#### **Absorption**

Following oral administration of single doses of 250 mg, 500 mg, and 750 mg of ciprofloxacin tablets (ciprofloxacin hydrochloride), ciprofloxacin is absorbed rapidly and extensively mainly from the small intestine, reaching maximum serum concentration 1-2 hours later.

The absolute bioavailability is approximately 70% to 80%. Maximum serum concentrations ( $C_{max}$ ) and total areas under serum concentration vs. time curves (AUC) increased in proportion to dose.

#### **Food**

The administration of ciprofloxacin with food delayed absorption, as shown by an increase of approximately 50% in time to peak concentrations, but did not cause other changes in the pharmacokinetics of ciprofloxacin.

#### **Distribution**

The protein binding of ciprofloxacin is low (20% to 30%), and the substance is present in plasma largely in a non-ionized form. Ciprofloxacin can diffuse freely into the extravascular space. The large steady-state volume of distribution of 2-3 L/kg body weight shows that ciprofloxacin penetrates in tissues resulting in concentrations which clearly exceed the corresponding serum levels.

#### **Metabolism**

Small concentrations of four metabolites have been reported. They were identified as desethyleneciprofloxacin (M1), sulphociprofloxacin (M2), oxociprofloxacin (M3) and formylciprofloxacin (M4). M1 to M3 display antibacterial activity comparable to or inferior to that of nalidixic acid. M4, with the smallest quantity, is largely equivalent to norfloxacin in its antimicrobial activity.

#### **Excretion**

Ciprofloxacin is largely excreted unchanged both renally and to a smaller extent non-renally. Renal clearance is between 0.18 to 0.3 L/h/kg and the total body clearance between 0.48 to 0.60 L/h/kg. Ciprofloxacin undergoes both glomerular filtration and tubular secretion.

Non-renal clearance of ciprofloxacin is mainly due to active transintestinal secretion as well as metabolization. 1% of the dose is excreted via the biliary route. Ciprofloxacin is present in the bile in high concentrations.

## **Special Populations and Conditions**

### ***Geriatrics:***

No dosage adjustment based on age alone is necessary for elderly patients. Compromised renal function may lead to increased drug exposure in this population group as ciprofloxacin is substantially excreted by the kidney (see **DETAILED PHARMACOLOGY: Human Pharmacology**).

### ***Hepatic Impairment:***

In preliminary studies in patients with stable chronic liver cirrhosis (with mild to moderate hepatic impairment), no significant changes in ciprofloxacin pharmacokinetics were observed. The kinetics of ciprofloxacin in patients with acute hepatic insufficiency and stable chronic cirrhosis (with severe hepatic impairment), however, have not been fully elucidated. An increased incidence of nausea, vomiting, headache and diarrhea were observed in this patient population (see **DETAILED PHARMACOLOGY: Human Pharmacology**).

### ***Renal Impairment:***

Ciprofloxacin is eliminated primarily by renal excretion. Patients with renal insufficiency had significantly increased AUCs, prolonged (about 2-fold) elimination half-lives, and decreased renal clearances (see **DETAILED PHARMACOLOGY: Human Pharmacology**).

Some modification of dosage is recommended, particularly for patients with severe renal dysfunction. Only a small amount of ciprofloxacin (< 10%) is removed from the body after hemodialysis or peritoneal dialysis (see **DOSAGE AND ADMINISTRATION: Special Populations - Impaired Renal Function**).

## **STORAGE AND STABILITY**

**Tablets:** Store at room temperature 15°C- 30°C in a dry place.

## **DOSAGE FORMS, COMPOSITION AND PACKAGING**

RIVA-CIPROFLOXACIN 250 mg Tablets: White to off-white, round, circular, biconvex, film-coated tablet, with '250' debossed on one side and plain on other side. Bottles of 100's.

RIVA-CIPROFLOXACIN 500 mg Tablets: White to off-white, capsule shaped, biconvex, film-coated tablet, with '500' debossed on one side and plain on other side. Bottles of 100's and 500's.

RIVA-CIPROFLOXACIN 750 mg Tablets: White to off-white, capsule shaped, biconvex, film-coated tablet, with '750' debossed on one side and plain on other side. Bottles of 50's.

## **COMPOSITION**

Ciprofloxacin Hydrochloride, Microcrystalline Cellulose, Maize starch, Colloidal Anhydrous Silica, Crospovidone, Pregelatinized starch, Purified Talc, Magnesium Stearate, Hypromellose, Polyethylene Glycol and Titanium Dioxide.

## PART II: SCIENTIFIC INFORMATION

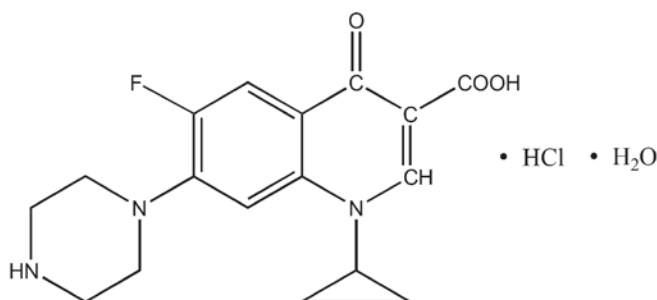
### PHARMACEUTICAL INFORMATION

**Drug Substance:** Ciprofloxacin hydrochloride

**Proper Name:** Ciprofloxacin hydrochloride

**Chemical Name:** 1-cyclopropyl-6-fluoro-1,4-dihydro-4-oxo-7-(1-piperazinyl)-3-quinolinecarboxylic acid hydrochloride monohydrate

**Structural Formula:**



**Molecular Formula:** C<sub>17</sub>H<sub>18</sub>FN<sub>3</sub>O<sub>3</sub> HCl H<sub>2</sub>O

**Molecular Weight:** 385.8 g/mol

**Description:** Ciprofloxacin hydrochloride is a pale yellow crystalline powder. It is sparingly soluble in water. Its solubility in aqueous buffer of pH 7.4 at 21°C is 0.19 g/L, while the solubility is considerably higher at slightly acidic or slightly alkaline pH. At 140°C water of crystallization is lost. At 307°C decomposition takes place. The pH of ciprofloxacin hydrochloride is between 3 and 4.5 in a solution (1 in 40). The pKa<sub>1</sub> is 6.5 and pKa<sub>2</sub> is 8.9 determined using a 3 x 10<sup>-4</sup> M solution of 25°C.

## CLINICAL TRIALS

### Comparative Bioavailability Studies

A randomized, double blinded, balanced, two treatment, two period, two sequence, single dose, two way crossover, bioequivalence study comparing RIVA-CIPROFLOXACIN (ciprofloxacin hydrochloride) 750 mg tablets (Laboratoire Riva Inc.) with CIPRO<sup>®</sup> (ciprofloxacin hydrochloride) 750 mg tablets (Bayer Inc.) was conducted in 23 healthy adult male subjects under fasting conditions.

Summary Table of the Comparative Bioavailability Data				
Ciprofloxacin				
(1 × 750 mg)				
From measured data				
Geometric Mean				
Arithmetic Mean (CV %)				
Parameter	Test* (A)	Reference† (B)	% Ratio of Geometric Means	90% Confidence Interval
AUC <sub>T</sub> (ng.h/mL)	18153.253 19237.528 (41.88)	17434.307 18084.713 (29.51)	104.40	95.35 - 114.30
AUC <sub>I</sub> (ng.h/mL)	19039.941 20118.476 (40.12)	18288.361 18969.748 (29.46)	104.37	95.49 - 114.08
C <sub>max</sub> (ng/mL)	3667.917 3817.471 (27.10)	3788.820 3950.936 (31.13)	96.97	88.14 - 106.69
T <sub>max</sub> <sup>§</sup> (h)	1.501 (44.05)	1.652 (42.00)		
T <sub>½</sub> <sup>§</sup> (h)	5.650 (22.45)	5.497 (16.95)		

\* RIVA-CIPROFLOXACIN (ciprofloxacin hydrochloride) 750mg tablets (Laboratoire Riva Inc.)  
† Cipro (ciprofloxacin hydrochloride) 750mg tablets (Bayer Inc.) were purchased in Canada  
§ Expressed as the arithmetic mean (CV%) only

## DETAILED PHARMACOLOGY

### Animal Pharmacology

#### *Effects on Histamine Release*

Ciprofloxacin was administered intravenously to 9 anaesthetized dogs (initially with thiopental sodium at 25 mg/kg IV, followed by continuous infusion of a mixture of fentanyl 0.04 mg/kg/h and dehydrobenzperidol 0.25 mg/kg/h) at a single dose of 3, 10 or 30 mg/kg. Ciprofloxacin treatment resulted in circulatory changes similar to those caused by histamine release. These were reductions in blood pressure, cardiac output and maximum rate of pressure increase in the left ventricle (dp/dt<sub>max</sub>), and increase in heart rate. This histamine-liberating effect was counteracted by the simultaneous intravenous administration of 0.01 mg/kg pyrilamine maleate. No signs of histamine liberation were observed on conscious animals.

In vitro experiments on isolated rat mast cells also indicate that ciprofloxacin at concentrations of 0.1 to 100 mg/L has histamine liberating properties.



### ***Bronchodilatory Effects***

Ciprofloxacin was tested on isolated guinea-pig trachea at concentrations of 0.0001 to 10 mg/L. It produced a dose-related small but significant relaxation of respiratory airway smooth muscle. It has, however, no effect on leukotriene D4 and histamine-induced contractions at these doses.

### ***Central Nervous System (CNS) Effects***

Ciprofloxacin was administered orally to 4 groups of 1 cat each under chloralose-urethane anaesthesia at doses of 0, 10, 20, and 100 mg/kg. No effects were observed on neuromuscular transmission, flexor reflex, or blood pressure.

### ***Gastrointestinal Effects***

Ciprofloxacin was administered orally to 4 groups of 20 mice each at doses of 0, 10, 30, and 100 mg/kg, 40 minutes prior to a 15% charcoal suspension. No effect was observed in intestinal charcoal transit time. When given to 3 groups of 20 rats each at doses of 0, 30 or 100 mg/kg, no gastric lesions were observed on sacrificing the animals after 5 hours.

When given intraduodenally to 3 groups of 8 rats each at doses of 0, 10, and 100 mg/kg, no increase in basal gastric acid secretion was observed on perfusion of the stomach.

### ***Effect on Blood Glucose and Serum Triglycerides***

Four groups of six fasting rats each were given intravenous injections of 0, 3, 10, and 30 mg/kg respectively. A slight but significant increase in blood glucose concentrations 60 minutes and 240 minutes post dose was observed in the 3 and 10 mg/kg groups but not in the 30 mg/kg group in comparison to controls.

At 60 minutes post dose, the serum triglyceride concentrations were slightly but significantly reduced in all three groups. This effect was not dose-related. At 120 minutes, the concentration was slightly elevated in the 30 mg/kg group.

## **Human Pharmacology**

### **Pharmacokinetics**

The relative bioavailability of oral ciprofloxacin, given as a tablet, is between 70 and 80 per cent compared to an equivalent dose of IV ciprofloxacin.

Following oral administration of single doses of 250 mg, 500 mg, and 750 mg of ciprofloxacin (as ciprofloxacin hydrochloride) respectively to groups of 3 healthy male volunteers (age:  $22.8 \pm 3.5$  years, weight:  $68.5 \pm 9.4$  kg), ciprofloxacin was absorbed rapidly and extensively from the gastrointestinal tract.

Maximum serum concentrations ( $C_{max}$ ) increased dose-proportionally and were attained 1 to 2 hours after oral dosing. The total areas under the serum concentration-time curves (AUC) were also increased in proportion to dose. Mean concentrations 12 hours after dosing with 250 mg, 500 mg, or 750 mg were 0.1, 0.2, and 0.4 mg/L, respectively. The serum elimination half-lives ( $t_{1/2}$ ) were between 4 and 6 hours. (See **Table 5** and **Figure 1**.)

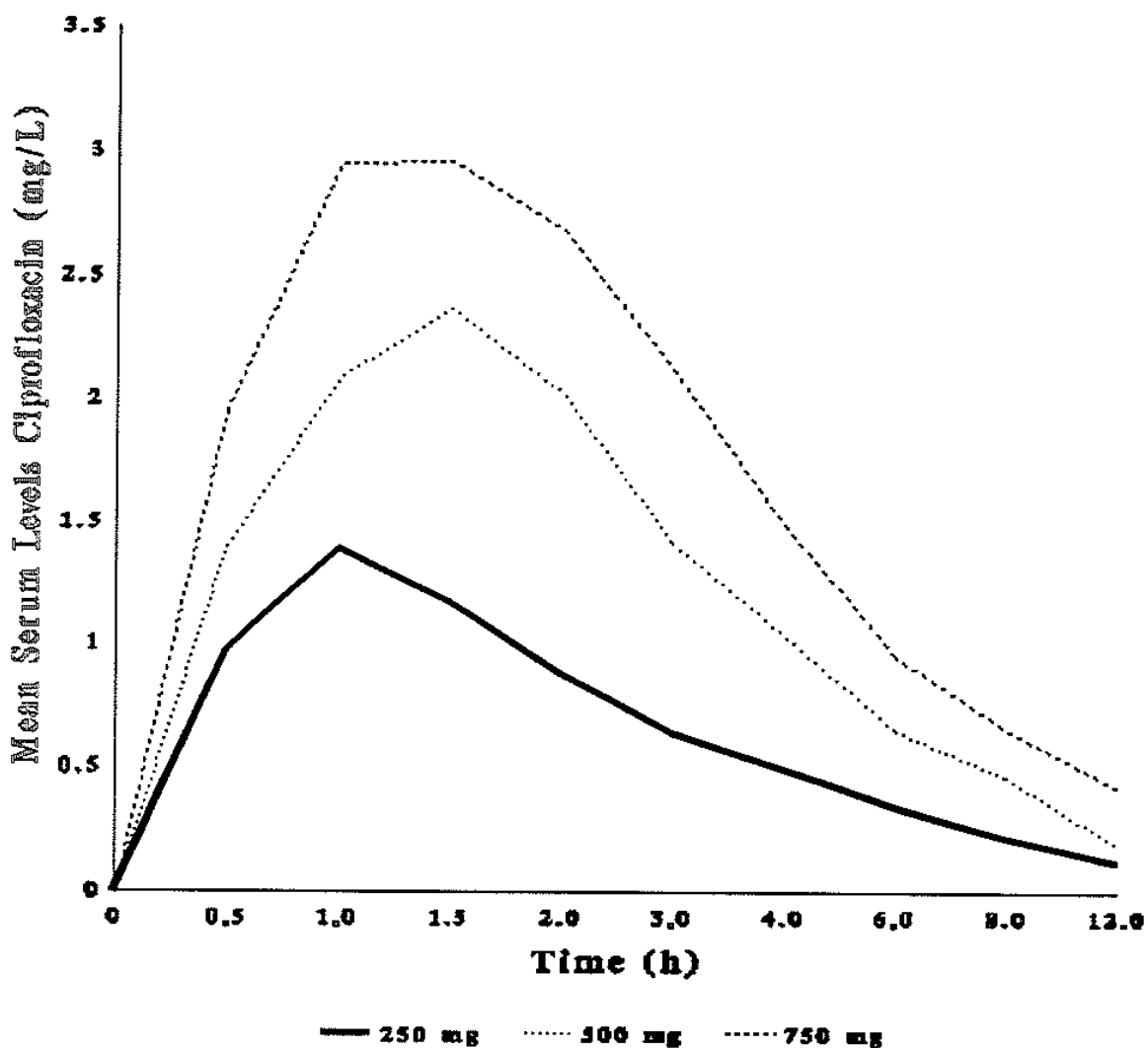
**Table 5: Pharmacokinetic Parameters Following a Single Oral Dose of Ciprofloxacin Tablets in Healthy Volunteers**

Dose	250 mg	500 mg	750 mg
$C_{max}(mg/L)$	1.42	2.60	3.41
$t_{1/2}$ (h)	4.19	4.87	5.34
$AUC_{0-\infty}(mg\cdot h/L)$	5.43	10.60	15.03
$t_{max}(h)$	1.11	1.11	1.56

Similar values were obtained following the oral administration of multiple doses every 12 hours for 7 days (see **Table 6**).

**Table 6: Mean Pharmacokinetic Parameters of Ciprofloxacin at Steady State in Healthy Volunteers**

Regimen	$AUC_{0-12h}$ (mg·h/L)	$C_{max}$ (mg/L)	$t_{max}$ (h)
Ciprofloxacin 500 mg PO q12h	13.7	2.97	1.23



Tablets

**Figure 1: Mean Ciprofloxacin Serum Concentration After Single Oral Doses**

## **Metabolism and Excretion**

Ciprofloxacin is largely excreted unchanged both renally and, to a small extent, extra-renally. Small concentrations of 4 metabolites have been reported: Desethyleneciprofloxacin (M1) (1.8%), sulphociprofloxacin (M2) (5.0%), oxociprofloxacin (M3) (9.6%) and formylciprofloxacin (M4) (0.1%).

Following the oral administration of a single 259 mg dose of <sup>14</sup>C-labelled ciprofloxacin to six healthy male volunteers (age: 25.0 ± 1.46 years, weight: 70.0 ± 3.39 kg), approximately 94% of the dose was recovered in the urine and feces over five days. Most of the radioactivity was recovered in the urine (55.4%). Unchanged ciprofloxacin was the major radioactive moiety identified in both urine and feces, accounting for 45% and 25% of the dose, respectively. Total (urine and feces) excretion of all metabolites was 18.8%.

**Table 7** shows urinary recovery data from another trial where healthy subjects were administered a single dose of ciprofloxacin in tablet form (see **Table 7**).

**Table 7: Mean Urinary Excretion of Ciprofloxacin**

<b>Hours After Oral Administration of a Single Tablet</b>				
	<b>0 - 2</b>	<b>2 - 4</b>	<b>4 - 8</b>	<b>8 - 12</b>
<b>Urine Concentration mg/L (± S.D.)</b>				
250 mg PO	205 (±89)	163 (±145)	101 (±65)	32 (±28)
500 mg PO	255 (±204)	358 (±206)	117 (±86)	26 (±10)
750 mg PO	243 (±143)	593 (±526)	169 (±131)	55 (±36)
<b>Amount Excreted mg (± S.D.)</b>				
250 mg dose	54.38 (±36.22)	26.79 (±11.78)	22.84 (±6.79)	8.90 (±4.25)
500 mg dose	64.51 (±25.06)	47.37 (±15.65)	39.54 (±11.17)	15.52 (±5.39)
750 mg dose	68.90 (±41.85)	72.43 (±33.13)	61.07 (±21.68)	28.11 (±7.64)

Following the intravenous administration of a single 107 mg dose of <sup>14</sup>C-labelled ciprofloxacin to six healthy male volunteers (age: 23.7 ± 1.89 years, weight: 80.2 ± 3.45 kg), 15% of unchanged ciprofloxacin was recovered in the feces, suggesting that hepatic extraction and biliary excretion is an extra-renal clearance pathway for ciprofloxacin. Direct evidence of biliary excretion of ciprofloxacin was obtained in 12 patients (age 28-58) with T-tube drainage. A peak biliary concentration of 16 mg/L was seen 4 hours after a single oral dose of ciprofloxacin 500 mg.

## **Tissue Concentrations**

In one study, the apparent volume of distribution ( $V_{darea}$ ) of ciprofloxacin was estimated from the kinetic data recorded after oral doses and found to be approximately 3.5 L/kg, which suggests substantial tissue penetration.

The distribution of ciprofloxacin was observed to be rapid in healthy volunteers receiving various single and multiple intravenous doses. Fitting the serum profile to a two-compartment model provides a distribution phase with a half-life between 0.2 and 0.4 hours. The volume of distribution at steady state ( $V_{dss}$ ) and  $V_{darea}$  were between 1.7 and 2.7 L/kg respectively. The volume of the central compartment was between 0.16 and 0.63 L/kg, which approximates the total volume of extracellular water.

Single intravenous doses of 100, 150, and 200 mg ciprofloxacin were administered to nine

healthy volunteers to determine the excretion and distribution of ciprofloxacin following intravenous administration and to assess the effect of dose size on pharmacokinetic parameters.

Analysis with a three-compartmental pharmacokinetic model quantified approximate sizes and kinetics of distribution into two peripheral compartments: a rapidly equilibrating compartment ( $V_2$ ) with a high intercompartmental clearance rate, accounting for the rapid decline in ciprofloxacin concentrations in serum immediately following drug infusion; and a second, slowly equilibrating tissue compartment with relatively slow intercompartmental clearance. This would contribute to the prolonged terminal half-life (4 to 5 h) of ciprofloxacin IV.

The results of this study were as follows: volume of distribution at steady state ( $V_{ss}$ ) was determined to be between 2.0 and 2.9 L/kg. Volumes in each compartment were determined to be: central compartment 0.2 - 0.4, peripheral  $V_2$  0.6 - 0.8 and peripheral  $V_3$  1.2 - 1.6 L/kg.

Table 8 summarizes the results of tissue and fluid penetration of ciprofloxacin in man.

**Table 8: Distribution of Ciprofloxacin in Human Tissue/Fluid**

Tissue/Fluid	No. of Patients	Single Dose of Ciprofloxacin	Peak Concentration (mg/kg or mg/L)	Mean Serum Concentration (mg/L)	Tim After Dose (h)
Skin Blister Fluid	6	500 mg PO	1.4 ± 0.36	2.3 ± 0.7	1 - 6
Bone	4	750 mg PO	1.4 ± 1.0	2.9 ± 2.2	2 - 4
Gynecological Tissue	18	500 mg PO	1.3 ± 0.66 To 1.6 ± 0.97	1.4 ± 0.87	2 - 4
Prostatic Tissue	1	500 mg PO	3.76	1.84	2.5
Muscle	4	250 mg PO	2.4 ± 1.0	2.9 ± 2.2	2 - 4
Nasal Secretions	20	500 mg PO	1.4 ± 0.81	1.8 ± 0.48	1 - 3
Bronchial Tissues	10	200 mg IV	3.94 ± 2.5	1.62 ± 0.7	0.97
Vagina	18	100 mg IV	1.13 ± 0.2	0.61 ± 0.12	0.5
Ovary	18	100 mg IV	1.00 ± 0.23	0.61 ± 0.12	0.5

## Special Populations

### Geriatrics

In 4 females and 6 males, (age:  $67 \pm 4$  years, weight:  $65 \pm 6$  kg) with normal renal function for their age, given a single oral dose of 250 mg, maximum ciprofloxacin serum concentrations and areas under the serum concentration time curves were significantly higher than in 10 male younger volunteers (age:  $24 \pm 3$  years, weight:  $72 \pm 9$  kg). The time to peak serum concentrations, overall elimination half-life and urinary recovery of ciprofloxacin were similar in both age groups.

**Table 9: Comparison of Pharmacokinetic Parameters Between Healthy Elderly and Healthy Younger Volunteers Following Oral Administration of a Single 250 mg Tablet**

Parameter	Elderly Volunteers (Mean ± S.D.)	Younger Volunteers (Mean ± S.D.)
C <sub>max</sub> (mg/L)	1.8 ± 0.5	1.3 ± 0.4
t <sub>max</sub> (h)	1.2 ± 0.3	1.2 ± 0.1
t <sub>1/2</sub> (h)	3.7 ± 0.9	3.3 ± 0.6
Total AUC (mg•h/L)	7.25 ± 2.45	5.29 ± 1.21
% Dose Urinary Recovery after 24 hours	43	43

### Renal Impairment

Ciprofloxacin is eliminated primarily by renal excretion. However, the drug is also metabolized and partially cleared through the biliary system of the liver and through the intestine. This alternate pathway of drug elimination appears to compensate for the reduced renal excretion of patients with renal impairment. Nonetheless, some modification of dosage is recommended, particularly for patients with severe renal dysfunction.

The pharmacokinetics of ciprofloxacin following a single oral dose of 250 mg in 6 patients (5 male, 1 female, age: 51 ± 9 years) with normal renal function (see Group I, **Table 10**) were compared to 6 patients (3 male, 3 female, age: 63 ± 6 years) with renal impairment (see Group II, **Table 10**) and to 5 patients (2 male, 3 female, age: 63 ± 6 years) with end-stage renal failure, treated by haemodialysis (see Group III, **Table 10**). Patients with renal insufficiency had significantly increased AUCs, prolonged (about 2-fold) elimination half-lives, and decreased renal clearances.

Haemodialysis resulted in a minimal decrease in plasma levels. From the dialysate concentrations, it can be estimated that no more than 2% of the dose was removed by dialysis over 4 hours, which was less than the amount lost in the urine over 24 hours in patients of Group II (see **Table 10**).

**Table 10: Mean Pharmacokinetic Parameters for Ciprofloxacin Following Oral Administration of a Single 250 mg Tablet in Healthy Volunteers and in Patients with Renal Insufficiency**

Group	Creatinine Clearance (mL/s/1.73 m <sup>2</sup> ) (mL/min/1.73 m <sup>2</sup> )	Parameter					
		C <sub>max</sub> (mg/L)	t <sub>max</sub> (h)	Half-Life (h)	Total AUC (mg•h/mL)	Renal Clearance (mL/min)	% Dose Urinary Recovery (0-24h)
I	> 1.0 (> 60)	1.52 (± 0.21)	1.0 (± 0.0)	4.4 (±0.2)	6.94 (± 0.97)	232.9 (± 44.8)	37.0 (± 3.7)
II	< 0.33 (< 20)	1.70 (± 0.41)	1.7 (± 0.5)	8.7 (±0.9)	14.36 (± 3.5)	18.3 (± 3.5)	5.3 (± 1.7)
III	End-Stage Renal Failure Treated by Hemodialysis	2.07 (± 0.23)	1.6 (± 0.2)	5.8 (± 0.9)	15.87 (± 2.0)		

## **Hepatic Impairment**

In studies in patients with stable chronic cirrhosis (with mild to moderate hepatic impairment), no significant changes in ciprofloxacin pharmacokinetics have been observed. In a study of 7 cirrhotic patients and healthy volunteers given ciprofloxacin tablets (ciprofloxacin hydrochloride) 750 mg every 12 hours for a total of nine doses followed by a 1-week washout and then a 30-minute infusion of ciprofloxacin I.V. 200 mg, there was no difference in pharmacokinetics between patients with stable chronic cirrhosis (with mild to moderate hepatic impairment) and healthy volunteers.

## **MICROBIOLOGY**

### **Mechanism of Action**

The bactericidal action of ciprofloxacin results from inhibition of enzymes topoisomerase II (DNA gyrase) and topoisomerase IV, which are required for bacterial DNA replication, transcription, repair, and recombination.

### **Drug Resistance**

The mechanism of action of fluoroquinolones, including ciprofloxacin, is different from that of penicillins, cephalosporins, aminoglycosides, macrolides, and tetracyclines; therefore, microorganisms resistant to these classes of drugs may be susceptible to ciprofloxacin and other fluoroquinolones. There is no known cross-resistance between ciprofloxacin and other classes of antimicrobials. *In vitro* resistance to ciprofloxacin develops slowly by multiple step mutations. Resistance to ciprofloxacin due to spontaneous mutations occurs at a general frequency of between  $<10^{-9}$  to  $1 \times 10^{-6}$ .

### **Activity *in vitro* and *in vivo***

Ciprofloxacin has *in vitro* activity against a wide range of gram-positive and gram-negative microorganisms. Ciprofloxacin is slightly less active when tested at acidic pH. The inoculum size has little effect when tested *in vitro*. The minimal bactericidal concentration (MBC) generally does not exceed the minimal inhibitory concentration (MIC) by more than a factor of 2. Ciprofloxacin has been shown to be active against most strains of the following microorganisms, both *in vitro* and in clinical infections:

#### **Aerobic gram-positive microorganisms**

*Enterococcus faecalis* (Many strains are only moderately susceptible.)

*Staphylococcus aureus* (methicillin-susceptible strains only)

*Staphylococcus epidermidis* (methicillin-susceptible strains only)

*Staphylococcus saprophyticus*

*Streptococcus pyogenes*

#### **Aerobic gram-negative microorganisms**

*Campylobacter jejuni*

*Citrobacter diversus*

*Citrobacter freundii*

*Enterobacter cloacae*

*Proteus mirabilis*

*Proteus vulgaris*

*Providencia rettgeri*

*Providencia stuartii*

<i>Escherichia coli</i>	<i>Pseudomonas aeruginosa</i>
<i>Haemophilus influenzae</i>	<i>Salmonella typhi</i>
<i>Haemophilus parainfluenzae</i>	<i>Serratia marcescens</i>
<i>Klebsiella pneumoniae</i>	<i>Shigella boydii</i>
<i>Moraxella catarrhalis</i>	<i>Shigella dysenteriae</i>
<i>Morganella morganii</i>	<i>Shigella flexneri</i>
<i>Neisseria gonorrhoeae</i>	<i>Shigella sonnei</i>

The following *in vitro* data are available, **but their clinical significance is unknown.**

Ciprofloxacin exhibits *in vitro* minimum inhibitory concentrations (MICs) of 1 µg/mL or less against most (≥90%) strains of the following microorganisms; however, the safety and effectiveness of ciprofloxacin in treating clinical infections due to these microorganisms have not been established in adequate and well-controlled clinical trials.

### **Aerobic gram-positive microorganisms**

*Staphylococcus haemolyticus*  
*Staphylococcus hominis*

### **Aerobic gram-negative microorganisms**

<i>Acetivobacter iwoffii</i>	<i>Salmonella enteritidis</i>
<i>Aeromonas hydrophila</i>	<i>Vibrio cholerae</i>
<i>Edwardsiella tarda</i>	<i>Vibrio parahaemolyticus</i>
<i>Enterobacter aerogenes</i>	<i>Vibrio vulnificus</i>
<i>Legionella pneumophila</i>	<i>Yersinia enterocolitica</i>
<i>Pasteurella multocida</i>	

Most strains of *Burkholderia cepacia* and some strains of *Stenotrophomonas maltophilia* are resistant to ciprofloxacin as are most anaerobic bacteria, including *Bacteroides fragilis* and *Clostridium difficile*.

### **Susceptibility Tests**

**Dilution Techniques:** Quantitative methods are used to determine antimicrobial minimal inhibitory concentrations (MICs). These MICs provide estimates of the susceptibility of bacteria to antimicrobial compounds. The MICs should be determined using a standardized procedure. Standardized procedures are based on a dilution method (1) (broth or agar) or equivalent with standardized inoculum concentrations and standardized concentrations of ciprofloxacin powder. The MIC values should be interpreted according to the criteria outlined in **Table 11**.

**Diffusion Techniques:** Quantitative methods that require measurement of zone diameters also provide reproducible estimates of the susceptibility of bacteria to antimicrobial compounds. One such standardized procedure (2) requires the use of standardized inoculum concentrations. This procedure uses paper disks impregnated with 5 µg ciprofloxacin to test the susceptibility of microorganisms to ciprofloxacin.

Reports from the laboratory providing results of the standard single-disk susceptibility test with a 5 µg ciprofloxacin disk should be interpreted according to the criteria outlined in Table 11.

Interpretation involves correlation of the diameter obtained in the disk test with the MIC for ciprofloxacin.

**Table 11: Susceptibility Interpretative Criteria for Ciprofloxacin**

Species	MIC (µg/mL)			Zone Diameter (mm)		
	S	I	R	S	I	R
Enterobacteriaceae	≤1	2	≥4	≥21	16-20	≤15
<i>Enterococcus faecalis</i>	≤1	2	≥4	≥21	16-20	≤15
Methicillin susceptible <i>Staphylococcus</i> species	≤1	2	≥4	≥21	16-20	≤15
<i>Pseudomonas aeruginosa</i>	≤1	2	≥4	≥21	16-20	≤15
<i>Haemophilus influenzae</i>	≤1 <sup>a</sup>	g	g	≥21 <sup>b</sup>	g	g
<i>Haemophilus parainfluenzae</i>	≤1 <sup>a</sup>	g	g	≥21 <sup>b</sup>	g	g
<i>Streptococcus pyogenes</i>	≤1 <sup>c</sup>	2 <sup>c</sup>	≥4 <sup>c</sup>	≥21 <sup>d</sup>	16-20 <sup>d</sup>	≤15 <sup>d</sup>
<i>Neisseria gonorrhoeae</i>	≤0.06 <sup>e</sup>	0.12 – 0.5 <sup>e</sup>	≥1 <sup>e</sup>	≥41 <sup>f</sup>	28-40 <sup>f</sup>	≤27 <sup>f</sup>

Abbreviations: I = Intermediate; MIC = minimum inhibitory concentration; µg = microgram; mL = milliliter; mm = millimeter; R = Resistant; S = Susceptible

a This interpretive standard is applicable only to broth microdilution susceptibility tests with *Haemophilus influenzae* and *Haemophilus parainfluenzae* using *Haemophilus* Test Medium (HTM). (1)

b This zone diameter standard is applicable only to tests with *Haemophilus influenzae* and *Haemophilus parainfluenzae* using *Haemophilus* Test Medium (HTM). (2)

c These interpretive standards are applicable only to broth microdilution susceptibility tests with streptococci using cation-adjusted Mueller-Hinton broth with 2-5% lysed horse blood.

d These zone diameter standards are applicable only to tests performed for streptococci using Mueller- Hinton agar supplemented with 5% sheep blood incubated in 5% CO<sub>2</sub>.

e This interpretive standard is applicable only to agar dilution test with GC agar base and 1% defined growth supplement.

f This zone diameter standard is applicable only to disk diffusion tests with GC agar base and 1% defined growth supplement.

g The current absence of data on resistant strains precludes defining any results other than “Susceptible”. Strains yielding MIC results suggestive of a “nonsusceptible” category should be submitted to a reference laboratory for further testing.

A report of “Susceptible” indicates that the pathogen is likely to be inhibited if the antimicrobial compound in the blood reaches the concentrations usually achievable. A report of “Intermediate” indicates that the result should be considered equivocal, and, if the microorganism is not fully susceptible to alternative, clinically feasible drugs, the test should be repeated. This category implies possible clinical applicability in body sites where the drug is physiologically concentrated or in situations where high dosage of drug can be used. This category also provides a buffer zone which prevents small uncontrolled technical factors from causing major discrepancies in interpretation. A report of “Resistant” indicates that the pathogen is not likely to be inhibited if the antimicrobial compound in the blood reaches the concentrations usually achievable; other therapy should be selected.



**Quality Control:** Standardized susceptibility test procedures require the use of laboratory control microorganisms to control the technical aspects of the laboratory procedures. For dilution technique, standard ciprofloxacin powder should provide the MIC values according to criteria outlined in **Table 12**. For diffusion technique, the 5 µg ciprofloxacin disk should provide the zone diameters outlined in **Table 12**.

**Table 12: Quality Control for Susceptibility Testing**

Strains	MIC range (µg/mL)	Zone Diameter (mm)
<i>Enterococcus faecalis</i> ATCC 29212	0.25 – 2	-
<i>Escherichia coli</i> ATCC 25922	0.004 - 0.015	30 – 40
<i>Haemophilus influenzae</i> ATCC 49247	0.004 - 0.03 <sup>a</sup>	34 – 42 <sup>d</sup>
<i>Pseudomonas aeruginosa</i> ATCC 27853	0.25 – 1	25 – 33
<i>Staphylococcus aureus</i> ATCC 29213	0.12 – 0.5	-
<i>Staphylococcus aureus</i> ATCC 25923	-	22 – 30
<i>Neisseria gonorrhoeae</i> ATCC 49226	0.001 – 0.008 <sup>b</sup>	48 – 58 <sup>e</sup>
<i>C. jejuni</i> ATCC 33560	0.06 – 0.25 and 0.03 – 0.12 <sup>c</sup>	-

Abbreviations: ATCC = American Type Culture Collection; MIC = minimum inhibitory concentration; µg = microgram; mL = milliliter; mm = millimeter

a This quality control range is applicable to only *H. influenzae* ATCC 49247 tested by a broth microdilution procedure using Haemophilus Test Medium (HTM). (1)

b *N. gonorrhoeae* ATCC 49226 tested by agar dilution procedure using GC agar and 1% defined growth supplement in a 5% CO<sub>2</sub> environment at 35-37°C for 20-24 hours.(2)

c *C. jejuni* ATCC 33560 tested by broth microdilution procedure using cation adjusted Mueller Hinton broth with 2.5-5% lysed horse blood in a microaerophilic environment at 36-37°C for 48 hours and for 42°C at 24 hours, respectively.

d These quality control limits are applicable to only *H. influenzae* ATCC 49247 testing using Haemophilus Test Medium (HTM). (2)

e These quality control limits are applicable only to tests conducted with *N. gonorrhoeae* ATCC 49226 performed by disk diffusion using GC agar base and 1% defined growth supplement.

## TOXICOLOGY

### Acute Toxicity

**Table 13: LD<sub>50</sub> (mg/kg) across species**

Species	Mode of Administration	LD <sub>50</sub> (mg/kg)
Mouse	PO	Approx. 5000
Rat	PO	Approx. 5000
Rabbit	PO	Approx. 2500
Mouse	I.V.	Approx. 290
Rat	I.V.	Approx. 145
Rabbit	I.V.	Approx. 125
Dog	I.V.	Approx. 250

## **Chronic Toxicity**

### ***Subacute Tolerability Studies Over 4 Weeks***

Oral administration: Doses up to and including 100 mg/kg were tolerated without damage by rats. Pseudoallergic reactions due to histamine release were observed in dogs.

Parenteral administration: In the highest-dose group in each case (rats 80 mg/kg and monkeys 30 mg/kg), crystals containing ciprofloxacin were found in the urine sediment. There were also changes in individual renal tubules, with typical foreign-body reactions due to crystal-like precipitates. These changes are considered secondary inflammatory foreign-body reactions due to the precipitation of a crystalline complex in the distal renal tubule system.

### ***Subchronic Tolerability Studies over 3 Months***

Oral administration: All doses up to and including 500 mg/kg were tolerated without damage by rats. In monkeys, crystalluria and changes in the renal tubules were observed in the highest-dose group (135 mg/kg).

Parenteral administration: Although the changes in the renal tubules observed in rats were in some cases very slight, they were present in every dose group. In monkeys they were found only in the highest-dose group (18 mg/kg) and were associated with slightly reduced erythrocyte counts and hemoglobin values.

### ***Chronic Tolerability Studies Over 6 Months***

Oral administration: Doses up to and including 500 mg/kg and 30 mg/kg were tolerated without damage by rats and monkeys, respectively. Changes in the distal renal tubules were again observed in some monkeys in the highest-dose group (90 mg/kg).

Parenteral administration: In monkeys slightly elevated urea and creatinine concentrations and changes in the distal renal tubules were recorded in the highest-dose group (20 mg/kg).

## **Carcinogenicity**

In carcinogenicity studies in mice (21 months) and rats (24 months) with doses up to approximately 1000 mg/kg bw/day in mice and 125 mg/kg bw/day in rats (increased to 250 mg/kg bw/day after 22 weeks), there was no evidence of a carcinogenic potential at any dose level.

## **Reproductive Toxicology**

Fertility studies in rats: Fertility, the intrauterine and postnatal development of the young, and the fertility of F1 generation were not affected by ciprofloxacin.

### ***Embryotoxicity studies:***

These yielded no evidence of any embryotoxic or teratogenic action of ciprofloxacin.

### ***Perinatal and postnatal development in rats:***

No effects on the perinatal or postnatal development of the animals were detected. At the end of the rearing period histological investigations did not bring to light any sign of articular damage in the young.

## **Mutagenesis**

Eight *in vitro* mutagenicity tests have been conducted with ciprofloxacin. Test results are listed below:

- *Salmonella*: Microsome Test (Negative)
- *E. coli*: DNA Repair Assay (Negative)
- Mouse Lymphoma Cell Forward Mutation Assay (Positive)
- Chinese Hamster V79 Cell HGPRT Test (Negative)
- Syrian Hamster Embryo Cell Transformation Assay (Negative)
- *Saccharomyces cerevisiae*: Point Mutation Assay (Negative)
- Mitotic Crossover and Gene Conversion Assay (Negative)
- Rat Hepatocyte Primary Culture DNA Repair Assay (LIDS) (Positive)

Two of the eight tests were positive, but results of the following four *in vivo* test systems gave negative results:

- Rat Hepatocyte DNA Repair Assay;
- Micronucleus Test (Mice);
- Dominant Lethal Test (Mice);
- Chinese Hamster Bone Marrow

## **Special Tolerability Studies**

It is known from comparative studies in animals, both with the older gyrase inhibitors and the more recent ones, that this substance class produces a characteristic damage pattern. Kidney damage, cartilage damage in weight-bearing joints of immature animals, and eye damage may be encountered.

### ***Renal Tolerability studies***

The crystallization observed in the animal studies occurred preferentially under pH conditions that do not apply in man.

Compared to rapid infusion, a slow infusion of ciprofloxacin reduces the danger of crystal precipitation.

The precipitation of crystals in renal tubules does not immediately and automatically lead to kidney damage. In the animal studies, damage occurred only after high doses, with correspondingly high levels of crystalluria. For example, although they always caused crystalluria, even high doses were tolerated over 6 months without damage and without foreign-body reactions occurring in individual distal renal tubules.

Damage to the kidneys without the presence of crystalluria has not been observed. The renal damage observed in animal studies must not, therefore, be regarded as a primary toxic action of ciprofloxacin on the kidney tissue, but as typical secondary inflammatory foreign-body reactions due to the precipitation of a crystalline complex of ciprofloxacin, magnesium, and protein.

### ***Articular tolerability studies***

As it is also known for other gyrase inhibitors, ciprofloxacin causes damage to the large, weight-

bearing joints in immature animals.

The extent of the cartilage damage varies according to age, species, and dose; the damage can be reduced by taking the weight off the joints. Studies with mature animals (rat, dog) revealed no evidence of cartilage lesions.

***Retina tolerability studies***

Ciprofloxacin binds to the melanin containing structures including the retina. Potential effects of ciprofloxacin on the retina were assessed in various pigmented animal species. Ciprofloxacin treatment had no effect on the morphological structures of the retina and on electroretinographic findings.

## REFERENCES

1. CLSI (Clinical and Laboratory Standards Institute). Methods for Dilution Antimicrobial Susceptibility Tests for Bacteria That Grow Aerobically; Approved Standard. CLSI Document M7-A8, Vol. 29, No. 2. Eighth Edition ed. CLSI, Wayne, PA2009.
2. CLSI (Clinical and Laboratory Standards Institute). Performance Standards for Antimicrobial Disk Susceptibility Tests; Approved Standard. CLSI Document M2-A10 Vol. 29, No. 1. Tenth Edition ed. CLSI, Wayne, PA2009.
3. Aigner KR, Dalhoff A. Penetration activities of ciprofloxacin into muscle, skin and fat following oral administration. *J Antimicrob Chemother* 1986 Nov; 18(5):644-5.
4. Aldridge KE, Schiro DD, Tsai L, Janney A, Sanders CV, Marier RL. Ciprofloxacin (BAY o 9867) and in vitro comparison with other broad spectrum antibiotics. *Curr Ther Res* 1985;37(4):754-62.
5. Auckenthaler R, Michea-Hamzehpour M, Pechere JC. In-vitro activity of newer quinolones against aerobic bacteria. *J Antimicrob Chemother* 1986 Apr;17 Suppl B:29-39.
6. Barry AL, Fass RJ, Anhalt JP, Neu HC, Thornsberry C, Tilton RC, et al. Ciprofloxacin disk susceptibility tests: interpretive zone size standards for 5-microgram disks. *J Clin Microbiol* 1985 Jun;21(6):880-3.
7. Bauernfeind A, Petermuller C. In vitro activity of ciprofloxacin, norfloxacin and nalidixic acid. *Eur J Clin Microbiol* 1983 Apr;2(2):111-5.
8. Bayer A, Gajewska A, Stephens M, Stark JM, Pathy J. Pharmacokinetics of ciprofloxacin in the elderly. *Respiration* 1987;51(4):292-5.
9. Beermann D, Scholl H, Wingender W, Forster D, Beubler E. Metabolism of ciprofloxacin in man. In Neu HC & Weuta H (Eds) 1st International Ciprofloxacin Workshop, Leverkusen: Excerpta Medica, Amsterdam1985.
10. CLSI (Clinical and Laboratory Standards Institute). Methods for Antimicrobial Dilution and Disk Susceptibility Testing of Infrequently Isolated or Fastidious Bacteria; Approved Guideline. Document M45-A2. Second Edition ed. CLSI, Wayne, PA.2010.
11. Crump B, Wise R, Dent J. Pharmacokinetics and tissue penetration of ciprofloxacin. *Antimicrob Agents Chemother* 1983 Nov; 24(5):784-6.
12. Fass RJ. Treatment of skin and soft tissue infections with oral ciprofloxacin. *J Antimicrob Chemother* 1986 Nov; 18 Suppl D: 153-7.

13. Fass RJ. Efficacy and safety of oral ciprofloxacin for treatment of serious urinary tract infections. *Antimicrob Agents Chemother* 1987 Feb; 31(2):148-50.
14. Fass RJ. Efficacy and safety of oral ciprofloxacin in the treatment of serious respiratory infections. *Am J Med* 1987 Apr 27; 82(4A):202-7.
15. Fong IW, Ledbetter WH, Vandembroucke AC, Simbul M, Rahm V. Ciprofloxacin concentrations in bone and muscle after oral dosing. *Antimicrob Agents Chemother* 1986 Mar; 29(3):405-8.
16. Gasser TC, Ebert SC, Graversen PH, Madsen PO. Ciprofloxacin pharmacokinetics in patients with normal and impaired renal function. *Antimicrob Agents Chemother* 1987 May; 31(5):709-12.
17. Giamarellou H, Galanakis N, Dendrinou C, Stefanou J, Daphnis E, Daikos GK. Evaluation of ciprofloxacin in the treatment of *Pseudomonas aeruginosa* infections. *Eur J Clin Microbiol* 1986 Apr;5(2):232-5.
18. Gonzalez MA, Moranchel AH, Duran S, Pichardo A, Magana JL, Painter B, et al. Multiple-dose ciprofloxacin dose ranging and kinetics. *Clin Pharmacol Ther* 1985 Jun;37(6):633-7.
19. Greenberg RN, Kennedy DJ, Reilly PM, Luppen KL, Weinandt WJ, Bollinger MR, et al. Treatment of bone, joint, and soft-tissue infections with oral ciprofloxacin. *Antimicrob Agents Chemother* 1987 Feb;31(2):151-5.
20. Greenberg RN, Tice AD, Marsh PK, Craven PC, Reilly PM, Bollinger M, et al. Randomized trial of ciprofloxacin compared with other antimicrobial therapy in the treatment of osteomyelitis. *Am J Med* 1987 Apr 27; 82(4A):266-9.
21. Honeybourne D, Andrews JM, Ashby JP, Lodwick R, Wise R. Evaluation of the penetration of ciprofloxacin and amoxicillin into the bronchial mucosa. *Thorax* 1988 Sep; 43(9):715-9.
22. Honeybourne D, Wise R, Andrews JM. Ciprofloxacin penetration into lungs. *Lancet* 1987(2031):1040.
23. LeBel M, Bergeron MG, Vallee F, Fiset C, Chasse G, Bigonnesse P, et al. Pharmacokinetics and pharmacodynamics of ciprofloxacin in cystic fibrosis patients. *Antimicrob Agents Chemother* 1986 Aug; 30(2):260-6.
24. Ledergerber B, Bettex JD, Joos B, Flepp M, Luthy R. Effect of standard breakfast on drug absorption and multiple-dose pharmacokinetics of ciprofloxacin. *Antimicrob Agents Chemother* 1985 Mar; 27(3):350-2.
25. Licitra CM, Brooks RG, Sieger BE. Clinical efficacy and levels of ciprofloxacin in tissue in patients with soft tissue infection. *Antimicrob Agents Chemother* 1987 May; 31(5):805-7.

26. Ramirez-Ronda CH, Saavedra S, Rivera-Vazquez CR. Comparative, double-blind study of oral ciprofloxacin and intravenous cefotaxime in skin and skin structure infections. *Am J Med* 1987 Apr 27; 82(4A):220-3.
27. Raof S, Wollschlager C, Khan FA. Ciprofloxacin increases serum levels of theophylline. *Am J Med* 1987 Apr 27; 82(4A):115-8.
28. Ratcliffe NT, Smith JT. Effects of magnesium on the activity of 4-quinolone antibacterial agents. *J Pharm Pharmacol* 1983; 35(Suppl):61.
29. Schacht P, Arcieri G, Branolte J, Bruck H, Chysky V, Griffith E, et al. Worldwide clinical data on efficacy and safety of ciprofloxacin. *Infection* 1988; 16 Suppl 1:S29-43.
30. Schluter G. Toxicology of ciprofloxacin. *Excerpta Medica, Amsterdam*; In Neu HC, Weuta H (Eds) 1st International Ciprofloxacin Workshop, Leverkusen 1985/1986.
31. Smith JT. The mode of action of 4-quinolones and possible mechanisms of resistance. *J Antimicrob Chemother* 1986 Nov; 18 Suppl D:21-9.
32. Wolfson JS, Hooper DC. The fluoroquinolones: structures, mechanisms of action and resistance, and spectra of activity in vitro. *Antimicrob Agents Chemother* 1985 Oct; 28(4):581-6.
33. Zeiler HJ. Evaluation of the in vitro bactericidal action of ciprofloxacin on cells of *Escherichia coli* in the logarithmic and stationary phases of growth. *Antimicrob Agents Chemother* 1985 Oct; 28(4):524-7.
34. Bayer Inc. Product Monograph for Cipro® (Ciprofloxacin Hydrochloride Tablets) 250mg, 500mg and 750mg, Date of Revision: April 10, 2015, Control No. 180660.

## IMPORTANT: PLEASE READ

### PART III: CONSUMER INFORMATION

#### **RIVA-CIPROFLOXACIN** (Ciprofloxacin tablet BP)

This leaflet is Part 3 of a three-part “Product Monograph” for RIVA-CIPROFLOXACIN designed specifically for Consumers. This Leaflet is a summary and will not tell you everything about RIVA-CIPROFLOXACIN. Contact your doctor or pharmacist if you have any questions about the drug.

#### ABOUT THIS MEDICATION

##### **What the medication is used for:**

RIVA-CIPROFLOXACIN is used to treat certain types of bacterial infections.

##### **What it does:**

RIVA-CIPROFLOXACIN is antibiotic that kill the bacteria causing the infection.

##### **When it should not be used:**

Do not use RIVA-CIPROFLOXACIN if you:

- are allergic to ciprofloxacin, other quinolone antibiotics or to any non-medicinal ingredients in these products (see What the Nonmedicinal ingredients are).
- are currently taking tizanidine (ZANAFLEX®) for the management of spasticity. Tizanidine concentrations may increase and cause further side effects such as drowsiness, sleepiness and low blood pressure.

##### **What the medicinal ingredient is:**

ciprofloxacin as ciprofloxacin hydrochloride.

##### **What the non-medicinal ingredients are:**

Colloidal Anhydrous Silica, Crospovidon, Hypromellose, Magnesium Stearate, Maize starch, Microcrystalline Cellulose, Pregelatinized starch, Polyethylene Glycol, Purified Talc, and Titanium Dioxide.

##### **What dosage forms it comes in:**

RIVA-CIPROFLOXACIN 250 mg Tablets: White to off-white, round, biconvex, film-coated tablets, with score line on one side and plain on other side. Bottles of 100’s.

RIVA-CIPROFLOXACIN 500 mg Tablets: White to off-white, capsule shaped, biconvex, film-coated tablets, with score line on one side and plain on other side. Bottles of 100’s and 500’s.

RIVA-CIPROFLOXACIN 750 mg Tablets: White to off-white, capsule shaped, biconvex, film-coated tablets, plain on both sides. Bottles of 50’s.

#### WARNINGS AND PRECAUTIONS

##### Serious Warnings and Precautions

- **RIVA-CIPROFLOXACIN has been shown to lengthen the heartbeat on an electrocardiogram test (QT interval prolongation).**
- **Serious hypersensitivity (allergic) reactions have been reported in some patients receiving quinolone therapy, including RIVA-CIPROFLOXACIN.**
- **If you have myasthenia gravis, treatment with RIVA-CIPROFLOXACIN may make your condition worse. Do not use RIVA-CIPROFLOXACIN if you have this condition.**
- **Quinolones, including RIVA-CIPROFLOXACIN, are associated with an increased risk of tendinitis and tendon rupture in all ages. Speak to your doctor to determine if this medication is suitable for you.**
- **Seizures and toxic psychoses may occur with quinolone therapy. Tell your doctor if you have any central nervous system problems (ie, epilepsy). Your doctor will determine whether you should use this medication.**
- **RIVA-CIPROFLOXACIN can cause liver injury which may be fatal.**

BEFORE you can use RIVA-CIPROFLOXACIN talk to your doctor or pharmacist if you:

- Have a history of seizures
- Have a heart condition known as “QT prolongation”
- Have low levels of potassium in your blood
- Have liver or kidney disease or damage
- Are pregnant, planning to become pregnant, breast feeding or planning to breast-feed. RIVA-CIPROFLOXACIN is not recommended for use during pregnancy or nursing, as the effects on the unborn child or nursing infant are unknown.
- Are less than 18 years of age.
- Have a history of tendon problems associated with the use of a quinolone antibiotic.
- Have a condition known as myasthenia gravis.

You may become sensitive to the sun and ultraviolet light while taking RIVA-CIPROFLOXACIN. Exposure to sunlight and ultraviolet light, such as that used in tanning salons, should be minimized until you know how you respond.

**Driving and using machines:** Before you perform tasks which may require special attention, wait until you know how you respond to RIVA-CIPROFLOXACIN as it can cause dizziness.

#### INTERACTIONS WITH THIS MEDICATION

As with most medicines, interactions with other drugs are possible. Tell your doctor, nurse, or pharmacist about all the medicines you take, including drugs prescribed by other doctors, vitamins, minerals, natural supplements, or alternative medicines.



## IMPORTANT: PLEASE READ

Drugs that may interact with RIVA-CIPROFLOXACIN include:

- Theophylline or VIDEX® (didanosine) chewable/buffered tablets or pediatric powder. Serious and fatal reactions have been reported in patients receiving ciprofloxacin, including RIVA-CIPROFLOXACIN, and theophylline.
- Antacids, multivitamins, and other dietary supplements containing magnesium, calcium, aluminum, iron or zinc, all of which can interfere with the absorption of RIVA-CIPROFLOXACIN and may prevent them from working. You should take RIVA-CIPROFLOXACIN either 2 hours before or 6 hours after taking these products.
- Antidiabetic agents (eg, glyburide, glibenclamide, glimepiride, insulin) as the combination of any of these agents with ciprofloxacin may cause lower blood sugar.
- Nonsteroidal Anti-Inflammatory Drugs (NSAIDS).
- Caffeine (e.g. coffee) and other xanthine derivatives (e.g. pentoxifylline). Excessive caffeine intake should be avoided while taking RIVA-CIPROFLOXACIN.
- Certain heart medications known as antiarrhythmics (eg, quinidine, procainamide, amiodarone, sotalol).
- Other medications including oral anticoagulants (like warfarin and acenocoumarol), phenytoin, duloxetine, tizanidine, methylxanthines, sevelamer, sucralfate, clozapine, ropinirole, lidocaine, sildenafil, probenecid, methotrexate, metoclopramide, cyclosporine, and lanthanum carbonate.

### PROPER USE OF THIS MEDICATION

- RIVA-CIPROFLOXACIN should be taken as prescribed at approximately the same times each day with food or on an empty stomach.
- RIVA-CIPROFLOXACIN should not be taken with dairy products (like milk or yogurt) or calcium-fortified juices alone; however, RIVA-CIPROFLOXACIN may be taken with a meal that contains these products (see Interactions With This Medication).
- You should avoid excessive caffeine consumption while taking RIVA-CIPROFLOXACIN.
- You should drink lots of water while taking RIVA-CIPROFLOXACIN
- Swallow the RIVA-CIPROFLOXACIN tablets whole, with water as needed. **DO NOT SPLIT, CRUSH, OR CHEW THE TABLET.**

You should take RIVA-CIPROFLOXACIN for as long as your doctor prescribes it, even after you start to feel better. Stopping an antibiotic too early may result in failure to cure your infection.

#### Remember:

- Take your dose of RIVA-CIPROFLOXACIN as prescribed
- Complete the course of RIVA-CIPROFLOXACIN even if you are feeling better.
- Do not use RIVA-CIPROFLOXACIN for another condition or give it to others.

This information does not take the place of discussions with your doctor or health care professional about your medication or treatment.

#### Overdose

In case of drug overdose, contact a health care practitioner, hospital emergency department or regional Poison Control Centre immediately, even if there are no symptoms.

#### Missed Dose

Should you forget to take it at the usual time, you may take your dose later in the day. Do not take more than two doses of RIVA-CIPROFLOXACIN per day, even if you missed a dose.

### SIDE EFFECTS AND WHAT TO DO ABOUT THEM

Side effects may include:

- Nausea and vomiting
- Diarrhea
- Rash, blistering of skin
- Stomach pain/discomfort, gas
- Cramping
- Coordination problems (unsteady walk)
- Feeling unwell
- Increased muscle tone, inflammation of joints, muscle pain
- Loss of appetite
- Loss of hearing (tinnitus)
- Migraine
- Sleeping problems
- Problems with smell and taste
- Sweating
- Visual disturbances (eyesight problems)

If your eyesight worsens or changes in any way, consult your doctor and eye specialist immediately.

If you experience symptoms such as severe diarrhea (bloody or watery) with or without fever, abdominal pain, or tenderness, you may have Clostridium difficile colitis (bowel inflammation). If this occurs, stop taking RIVA-CIPROFLOXACIN and contact your healthcare professional immediately.

**If any of these affect you severely, tell your doctor or pharmacist.**

## IMPORTANT: PLEASE READ

SERIOUS SIDE EFFECTS, HOW OFTEN THEY HAPPEN AND WHAT TO DO ABOUT THEM				
	Symptom / effect	Talk with your doctor, nurse, or pharmacist		Stop taking drug and seek immediate medical help
		Only if severe	In all cases	
Rare	<b>Allergic Reaction:</b> rash, hives (skin eruptions), swelling of the face, lips, tongue or throat, difficulty swallowing or breathing, rapid heartbeat			✓
	<b>Central Nervous System Disorders:</b> Seizures/convulsions, confusion, tremors, hallucinations, depression, suicidal thoughts or psychotic reactions			✓
	<b>Photosensitivity Reaction:</b> Sensitivity to light, blistering of skin			✓
	Tendon pain, inflammation, or rupture			✓
	<b>Increased Blood Sugar:</b> frequent urination, thirst, hunger, tiredness, blurred vision, headache, trouble concentrating	✓		
	<b>Low Blood Sugar:</b> dizziness, weakness, headache, sweating, hunger	✓		

SERIOUS SIDE EFFECTS, HOW OFTEN THEY HAPPEN AND WHAT TO DO ABOUT THEM				
	Symptom / effect	Talk with your doctor, nurse, or pharmacist		Stop taking drug and seek immediate medical help
		Only if severe	In all cases	
Unknown	<b>Severe Bowel Disorder:</b> Persistent diarrhea, bloody or watery diarrhea, abdominal or stomach pain/cramping, blood/mucus in stool			✓
	<b>Nerve Disorder (Neuropathy):</b> Pain, burning, tingling, numbness, weakness		✓	
	<b>Liver Disorder:</b> yellowing of the skin or eyes, dark urine, abdominal pain, nausea, vomiting, loss of appetite, pale stools		✓	
	<b>Heart Disorder (QT Prolongation):</b> Irregular heartbeat		✓	

*This is not a complete list of side effects. For any unexpected effects while taking RIVA-CIPROFLOXACIN, contact your doctor or pharmacist.*

### HOW TO STORE IT

Store at room temperature 15°C- 30°C in a dry place.

**Keep out of reach and sight of children.**

## IMPORTANT: PLEASE READ

### REPORTING SUSPECTED SIDE EFFECTS

You can report any suspected adverse reactions associated with the use of health products to the Canada Vigilance Program by one of the following 3 ways:

- Report online at [www.healthcanada.gc.ca/medeffect](http://www.healthcanada.gc.ca/medeffect)
- Call toll-free at 1-866-234-2345
- Complete a Canada Vigilance Reporting Form and:
  - Fax toll-free to 1-866-678-6789, or  
Mail to: Canada Vigilance Program  
Health Canada  
Postal Locator 0701E  
Ottawa, Ontario  
K1A 0K9
  - Postage paid labels, Canada Vigilance Reporting Form and the adverse reaction reporting guidelines are available on the MedEffect™ Canada Website at [www.healthcanada.gc.ca/medeffect](http://www.healthcanada.gc.ca/medeffect).

*Note: Should you require information related to the management of side effects, contact your health professional. The Canada Vigilance Program does not provide medical advice.*

### MORE INFORMATION

For more information, please contact your health professional or pharmacist first, or **Laboratoire Riva Inc.** at 1-800-363-7988 or [info@labriva.com](mailto:info@labriva.com)

This document plus the full product monograph, prepared for health professionals by:

**Laboratoire Riva Inc.**  
660 Industriel Blvd.  
Blainville, Quebec  
J7C 3V4

[www.labriva.com](http://www.labriva.com)

Date of Revision: August 25, 2015