

## PRODUCT MONOGRAPH

### Pr **RIVA-BRIMONIDINE**

Brimonidine Tartrate Ophthalmic Solution

0.2% w/v

Relatively selective  $\alpha_2$ -adrenoceptor Agonist

Elevated Intraocular Pressure Therapy

**LABORATOIRE RIVA INC.**

660 Boul. Industriel  
Blainville, Quebec  
J7C 3V4

[www.labriva.com](http://www.labriva.com)

**Date of revision:**

April 21, 2021

Submission Control No.: 249860

## Table of Contents

<b>PART I: HEALTH PROFESSIONAL INFORMATION.....</b>	<b>3</b>
SUMMARY PRODUCT INFORMATION .....	3
INDICATIONS AND CLINICAL USE.....	3
CONTRAINDICATIONS .....	4
WARNINGS AND PRECAUTIONS.....	4
DRUG INTERACTIONS .....	8
DOSAGE AND ADMINISTRATION .....	9
OVERDOSAGE .....	9
ACTION AND CLINICAL PHARMACOLOGY .....	10
STORAGE AND STABILITY.....	10
SPECIAL HANDLING INSTRUCTIONS .....	10
DOSAGE FORMS, COMPOSITION AND PACKAGING .....	11
<b>PART II: SCIENTIFIC INFORMATION .....</b>	<b>12</b>
PHARMACEUTICAL INFORMATION.....	12
CLINICAL TRIALS .....	13
DETAILED PHARMACOLOGY .....	14
TOXICOLOGY .....	17
REFERENCES .....	20
<b>PART III: CONSUMER INFORMATION.....</b>	<b>21</b>

**Pr RIVA-BRIMONIDINE**  
Brimonidine Tartrate Ophthalmic Solution  
0.2% w/v

**PART I: HEALTH PROFESSIONAL INFORMATION**

**SUMMARY PRODUCT INFORMATION**

<b>Route of Administration</b>	<b>Dosage Form / Strength</b>	<b>All Nonmedicinal Ingredients</b>
Ophthalmic	Solution, 0.2% w/v brimonidine tartrate	Contains 0.005% benzalkonium chloride as preservative, citric acid monohydrate, polyvinyl alcohol, sodium chloride, sodium citrate dihydrate, sodium hydroxide/hydrochloric acid (pH adjusters) and water for injection.

**INDICATIONS AND CLINICAL USE**

RIVA-BRIMONIDINE (brimonidine tartrate ophthalmic solution 0.2% w/v) is indicated for the control of intraocular pressure in patients with chronic open-angle glaucoma or ocular hypertension.

**Geriatrics (> 65 years of age):**

No overall difference in safety and effectiveness has been observed between elderly and other adult patients. The  $C_{max}$  and apparent half-life of brimonidine tartrate were similar in elderly subjects (65 years or older) and younger adults, indicating that its systemic absorption and elimination were not significantly affected by age.

**Pediatrics (< 18 years of age):**

**Neonates and infants (children under the age of 2 years): The use of RIVA-BRIMONIDINE in neonates and infants is contraindicated.** Several serious adverse reactions have been reported in association with the administration of brimonidine tartrate ophthalmic solution 0.2% w/v to infants in the age range of 28 days to 3 months. (See **CONTRAINDICATIONS and ADVERSE REACTION sections**).

**Children (2-18 years of age):** The use of RIVA-BRIMONIDINE is currently **not recommended** in children, as several serious adverse reactions have been reported in association with the administration of brimonidine tartrate ophthalmic solution 0.2% w/v in pediatric population. (See **ADVERSE REACTION, Serious Reports of Adverse Reactions in Pediatric Patients section**).

## CONTRAINDICATIONS

RIVA-BRIMONIDINE is contraindicated in

- patients with hypersensitivity to brimonidine tartrate or any component of this medication. For a complete listing of nonmedicinal ingredients see the DOSAGE FORMS, COMPOSITION AND PACKAGING section of the Product Monograph.
- patients receiving monoamine oxidase (MAO) inhibitor therapy
- neonates and infants (children under the age of 2 years)

## WARNINGS AND PRECAUTIONS

### **General**

FOR TOPICAL OPHTHALMIC USE ONLY.

### **Carcinogenesis and Mutagenesis**

No compound-related carcinogenic effects were observed in 21 month and 2 year studies in mice and rats given oral doses of 2.5 mg base/kg/day and 1.0 mg base/kg/day of brimonidine tartrate, respectively. These oral doses are approximately 830 and 330 times greater, respectively, than the maximum recommended human daily ophthalmic dosage for RIVA-BRIMONIDINE (0.003 mg base/kg/day), based on a 60 kg human.

Brimonidine was not mutagenic or cytogenic in a series of *in vitro* and *in vivo* studies including the Ames test, host-mediated assay, chromosomal aberration assay in Chinese Hamster Ovary (CHO) cells, cytogenic studies in mice and dominant lethal assay.

### **Cardiac disorders**

Although brimonidine tartrate ophthalmic solution 0.2% w/v had minimal effect on blood pressure and heart rate of patients in clinical studies, caution should be exercised in treating patients with severe cardiovascular disease.

RIVA-BRIMONIDINE should be used with caution in patients with cerebral or coronary insufficiency, Raynaud's phenomenon, orthostatic hypotension or thromboangiitis obliterans.

### **Hepatic/Biliary/Pancreatic**

Brimonidine tartrate ophthalmic solution 0.2% w/v has not been studied in patients with hepatic or renal impairment; caution should be exercised in treating such patients.

### **Ophthalmologic**

The preservative in RIVA-BRIMONIDINE, benzalkonium chloride, may be absorbed by soft contact lenses. Patients wearing soft contact lenses should be instructed to wait at least 15 minutes after instilling RIVA-BRIMONIDINE to insert soft contact lenses.

Delayed ocular hypersensitivity reactions have been reported with brimonidine tartrate ophthalmic solution 0.2% w/v, with some reported to be associated with an increase in intraocular pressure (IOP) (see **ADVERSE REACTIONS** section).

### **Psychiatric**

RIVA-BRIMONIDINE should be used with caution in patients with depression.

### **Sensitivity/Resistance**

RIVA-BRIMONIDINE should be used with caution in patients with known hypersensitivity to other alpha-adrenoceptor agonists.

### **Special Populations**

**Pregnant Women:** Teratogenicity studies showed no adverse effects in rats and rabbits when oral doses (1.65 mg base/kg/day and 3.33 mg base/kg/day of brimonidine tartrate) were administered at approximately 550 and 1110 times, respectively, the maximum recommended human daily ophthalmic dosage for RIVA-BRIMONIDINE based on a 60 kg human.

There are no studies of brimonidine tartrate ophthalmic solution 0.2% w/v in pregnant women, however in animal studies, brimonidine crossed the placenta and entered into the fetal circulation to a limited extent (ratio of drug-related material in fetal:maternal blood = 0.1 - 0.3). Drug-derived material was eliminated from fetal tissues by 24 hours post-dose. RIVA-BRIMONIDINE should be used during pregnancy only if the potential benefit to the mother justifies the potential risk to the fetus.

**Nursing Women:** It is not known whether brimonidine is excreted in human milk, although in animal studies, brimonidine has been shown to be excreted in breast milk. During treatment with RIVA-BRIMONIDINE, a decision should be made whether to discontinue nursing or to discontinue the drug, taking into account the importance of the drug to the mother.

### **Pediatrics (< 18 years of age):**

**Neonates and infants (children under the age of 2 years):** **The use of RIVA-BRIMONIDINE in neonates and infants is contraindicated.** Several serious adverse reactions have been reported in association with the administration of brimonidine tartrate ophthalmic solution 0.2% w/v to infants in the age range of 28 days to 3 months. (See **CONTRAINDICATIONS and ADVERSE REACTION** sections).

**Children (2-18 years of age):** The use of RIVA-BRIMONIDINE is currently **not recommended** in children, as several serious adverse reactions have been reported in association with the administration of brimonidine tartrate ophthalmic solution 0.2% w/v in pediatric population. (See **ADVERSE REACTION, Serious Reports of Adverse Reactions in Pediatric Patients** section).

## **Occupational Hazards**

RIVA-BRIMONIDINE, as with other similar medications, can potentially cause fatigue and/or drowsiness in some patients. Patients who engage in hazardous activities should be cautioned of the potential for a decrease in mental alertness.

RIVA-BRIMONIDINE may also cause blurred vision or visual disturbance in some patients. The patient should wait until these symptoms have cleared before driving or using machinery.

## **ADVERSE REACTIONS**

### **Clinical Trial Adverse Drug Reactions**

*Because clinical trials are conducted under very specific conditions the adverse reaction rates observed in the clinical trials may not reflect the rates observed in practice and should not be compared to the rates in the clinical trials of another drug. Adverse drug reaction information from clinical trials is useful for identifying drug-related adverse events and for approximating rates.*

Based on safety data from two pivotal clinical studies and three ancillary studies conducted on brimonidine tartrate ophthalmic solution 0.2% w/v, most adverse reactions were transient and not commonly of a severity requiring discontinuation of treatment. Adverse events were coded using the COSTART dictionary available at the time of the study, but are presented in Table 1 below using MedDRA System Organ Class.

**Table 1: Treatment Related Adverse Reactions Occurring at  $\geq 1\%$  with Brimonidine Tartrate Ophthalmic Solution 0.2% w/v**

<b>System Organ Class Preferred Term<sup>a</sup></b>	<b>Brimonidine 0.2% n = &lt;717&gt; (%)</b>	<b>Timolol 0.5% n = &lt;413&gt; (%)</b>
<b>Eye disorders</b>		
Ocular hyperemia	178 (24.8%)	104 (25.2%)
Burning and stinging	161 (22.5%)	180 (43.6%)
Blurring	124 (17.3%)	93 (22.5%)
Foreign body sensation	111 (15.5%)	69 (16.7%)
Corneal staining/erosion	72 (10.0%)	48 (11.6%)
Ocular allergic reactions <sup>b</sup>	71 (9.9%)	1 (0.2%)
Ocular pruritus	70 (9.8%)	42 (10.2%)
Conjunctival follicles	69 (9.6%)	23 (5.6%)
Photophobia	53 (7.4%)	42 (10.2%)
Ocular dryness	50 (7.0%)	40 (9.7%)
Eyelid erythema	44 (6.1%)	22 (5.3%)
Ocular ache/pain	43 (6.0%)	18 (4.4%)
Lacrimation disorder	40 (5.6%)	21 (5.1%)
Conjunctival edema	38 (5.3%)	26 (6.3%)
Eyelid edema	35 (4.9%)	13 (3.1%)
Conjunctival blanching	27 (3.8%)	16 (3.9%)
Blepharitis	26 (3.6%)	12 (2.9%)
Ocular irritation	22 (3.1%)	6 (1.5%)
Abnormal vision	19 (2.6%)	15 (3.6%)

<b>System Organ Class Preferred Term<sup>a</sup></b>	<b>Brimonidine 0.2% n = &lt;717&gt; (%)</b>	<b>Timolol 0.5% n = &lt;413&gt; (%)</b>
Conjunctival discharge	10 (1.4%)	7 (1.7%)
Conjunctival papillae	7 (1.0%)	9 (2.2%)
<b>Gastrointestinal disorders</b>		
Oral dryness	185 (25.8%)	69 (16.7%)
Gastrointestinal symptoms	22 (3.1%)	14 (3.4%)
Abnormal taste	10 (1.4%)	5 (1.2%)
<b>General disorders and administration site conditions</b>		
Asthenia	20 (2.8%)	7 (1.7%)
Fatigue/drowsiness	109 (15.2%)	62 (15.0%)
Systemic other	32 (4.5%)	25 (6.1%)
<b>Nervous system disorders</b>		
Headache	117 (16.3%)	83 (20.1%)
Dizziness	30 (4.2%)	15 (3.6%)
<b>Respiratory, thoracic and mediastinal disorders</b>		
Upper respiratory symptoms	43 (6.0%)	21 (5.1%)
Nasal dryness	7 (1.0%)	4 (1.0%)

- a MedDRA System Organ Class and Preferred Terms  
b It should be noted that ocular allergic reaction includes allergic blepharitis, allergic blepharoconjunctivitis, allergic conjunctivitis, allergic reaction (ocular) and follicular conjunctivitis.

### **Less Common Clinical Trial Adverse Drug Reactions (<1%)**

**Cardiac disorders:** palpitations

**Immune system disorders:** systemic allergic reactions

**Psychiatric disorders:** depression

### **Serious Reports of Adverse Reactions in Pediatric Patients:**

In a 3-month, phase 3 study in children aged 2-7 years with glaucoma, inadequately controlled by beta-blockers, a high prevalence of somnolence (55%) was reported with brimonidine tartrate ophthalmic solution 0.2% w/v as adjunctive treatment. In 8% of children, this was severe and led to discontinuation of treatment in 13%. The incidence of somnolence decreased with increasing age, being least in the 7-year-old age group (25%), but was more affected by weight, occurring more frequently in those children weighing ≤20 kg (63%) compared to those weighing >20 kg (25%).

The safety and effectiveness of brimonidine tartrate ophthalmic solution has not been studied in children under the age of two years. During post-marketing surveillance somnolence, lethargy, hypotonia, hypothermia, bradycardia, hypotension, apnoea, respiratory depression, pallor and coma have been reported in neonates, infants and children receiving brimonidine either for congenital glaucoma or via accidental ingestion.

### **Post-Market Adverse Drug Reactions**

The following adverse reactions have been identified during postmarketing use of brimonidine tartrate ophthalmic solution 0.2% w/v in clinical practice. Because they are reported voluntarily from a population of unknown size, estimates of frequency cannot be made.

**Eye disorders:** iritis, iridocyclitis (anterior uveitis), miosis, conjunctivitis, eyelids pruritus

**Immune system disorders:** hypersensitivity, skin reaction

**Nervous system disorders:** syncope

**Vascular disorders:** hypotension

The following adverse reactions have been identified during postmarketing use of brimonidine tartrate ophthalmic solution 0.15% w/v in clinical practice. Because they are reported voluntarily from a population of unknown size, estimates of frequency cannot be made.

**Eye disorders:** vision blurred, conjunctivitis

**General disorders and administration site conditions:** fatigue, dizziness

**Immune system disorders:** hypersensitivity

**Nervous system disorders:** somnolence

## **DRUG INTERACTIONS**

### **Overview**

Brimonidine tartrate ophthalmic solution 0.2% w/v did not have clinically significant effects on pulse and blood pressure in chronic clinical studies. However, since alpha-agonists, as a class, may reduce pulse and blood pressure, caution in the concomitant use of drugs such as beta-blockers (ophthalmic and/or systemic), antihypertensives and/or cardiac glycosides is advised.

### **Drug-Drug Interactions**

Tricyclic antidepressants have been reported to blunt the hypotensive effect of systemic clonidine. It is not known whether the concurrent use of these agents with brimonidine tartrate ophthalmic solution 0.2% w/v can lead to an interference in IOP lowering effect. No data are available on the level of circulating catecholamines after brimonidine tartrate ophthalmic solution 0.2% w/v is instilled. Caution, however, is advised in patients taking tricyclic antidepressants which can affect the metabolism and uptake of circulating amines.

Although specific drug interaction studies have not been conducted with brimonidine tartrate ophthalmic solution 0.2% w/v, the possibility of an additive or potentiating effect with CNS depressants (alcohol, barbiturates, opiates, sedatives, or anesthetics) should be considered.

### **Drug-Food Interactions**

Interactions with food have not been established.

### **Drug-Herb Interactions**

Interactions with herbal products have not been established.

### **Drug-Laboratory Interactions**

Interactions with laboratory tests have not been established.



## DOSAGE AND ADMINISTRATION

### Recommended Dose and Dosage Adjustment

The recommended dose is one drop of RIVA-BRIMONIDINE (brimonidine tartrate ophthalmic solution 0.2% w/v) in the affected eye(s) twice daily (doses taken approximately 12 hours apart).

### Missed Dose

NOTE: If you forget to apply your eye drops at your normal time, simply apply them as soon as you remember. Then go back to the original schedule as directed by your doctor. **Don't try to catch up on missed drops by applying more than one dose at a time.**

### Administration

**Do not allow the dropper tip of the bottle to touch the eye or other surrounding structures, because this could cause eye injury or contaminate the tip with common bacteria known to cause eye infections. Serious damage to the eye with subsequent loss of vision may result if you use eye drop solutions that have become contaminated. If you experience any type of eye condition or have surgery, immediately seek your doctor's advice concerning the continued use of the bottle you are using.**

Patients Wearing Soft Contact Lenses:

Lenses should be removed prior to application of RIVA-BRIMONIDINE and not re-inserted earlier than 15 minutes after use.

## OVERDOSAGE

In ophthalmic overdose cases that have been received, the events reported have generally been those already listed as adverse reactions.

Systemic overdose resulting from accidental ingestion:

There is very limited information regarding accidental ingestion of brimonidine in adults. The only adverse event reported to date was hypotension. Treatment of an oral overdose includes supportive and symptomatic therapy; a patent airway should be maintained. Evacuation of the stomach should be considered during the first few hours after an overdose.

Symptoms of brimonidine overdose such as apnea, bradycardia, coma, hypotension, hypothermia, hypotonia, lethargy, pallor, respiratory depression, and somnolence have been reported in neonates, infants, and children receiving brimonidine tartrate ophthalmic solution 0.2% w/v as part of medical treatment of congenital glaucoma or by accidental oral ingestion (please refer to CONTRAINDICATIONS).

For management of a suspected drug overdose, contact your regional Poison Control Centre.
---

## **ACTION AND CLINICAL PHARMACOLOGY**

### **Mechanism of Action**

Brimonidine tartrate is a relatively selective alpha adrenergic receptor agonist that in radioligand binding assays and in functional assays, is approximately 1000 times more selective for the alpha-2 adrenoceptor than the alpha-1 adrenoceptor. This selectivity results in the absence of vasoconstriction in microvessels associated with human retinal xenografts.

Topical administration of brimonidine decreases IOP in humans. When used as directed, RIVA-BRIMONIDINE reduces elevated IOP with minimal effect on cardiovascular parameters.

RIVA-BRIMONIDINE has a rapid onset of action, with the peak ocular hypotensive effect occurring at approximately two hours post-dosing. The duration of effect is 12 hours or greater.

Fluorophotometric studies in animals and humans suggest that brimonidine tartrate has a dual mechanism of action. RIVA-BRIMONIDINE lowers IOP by reducing aqueous humor production and increasing uveoscleral outflow.

### **Pharmacodynamics**

Brimonidine tartrate ophthalmic solution 0.2% w/v has no effect on pulmonary function or exercise-induced tachycardia. The cardiovascular effects of brimonidine tartrate ophthalmic solution 0.2% w/v during exercise in normal volunteers were found to be limited to a slight suppression of systolic blood pressure, which was clinically insignificant, during the recovery period following a treadmill test.

### **Pharmacokinetics**

After ocular administration of brimonidine tartrate ophthalmic solution 0.2% w/v twice daily (both eyes) in humans for 10 days, plasma concentrations were low (mean  $C_{max}$ =0.06 ng/mL). With both brimonidine tartrate ophthalmic solution concentrations, plasma brimonidine levels peaked within 1 to 4 hours and declined with a systemic half-life of approximately 3 hours.

## **STORAGE AND STABILITY**

RIVA-BRIMONIDINE (brimonidine tartrate ophthalmic solution 0.2% w/v) should be stored at 15° C to 30°C. Discard unused solution at the end of treatment.

## **SPECIAL HANDLING INSTRUCTIONS**

Do not allow the dropper tip of the bottle to touch the eye or other surrounding structures, because this could cause eye injury or contaminate the tip with common bacteria known to cause eye infections. Serious damage to the eye with subsequent loss of vision may result if you use eye drop solutions that have become contaminated. If you experience any type of eye condition or have surgery, immediately seek your doctor's advice concerning the continued use of the bottle you are using.

## **DOSAGE FORMS, COMPOSITION AND PACKAGING**

RIVA-BRIMONIDINE (brimonidine tartrate ophthalmic solution 0.2% w/v) is supplied in LDPE 10 mL dropper bottles with a 5 mL fill volume.

Each mL of RIVA-BRIMONIDINE contains brimonidine tartrate 2 mg with the following non-medicinal ingredients: 0.005% benzalkonium chloride as preservative, citric acid monohydrate, sodium chloride, sodium citrate dihydrate, sodium hydroxide/hydrochloric acid (pH adjusters), polyvinyl alcohol and water for injection.

## PART II: SCIENTIFIC INFORMATION

### PHARMACEUTICAL INFORMATION

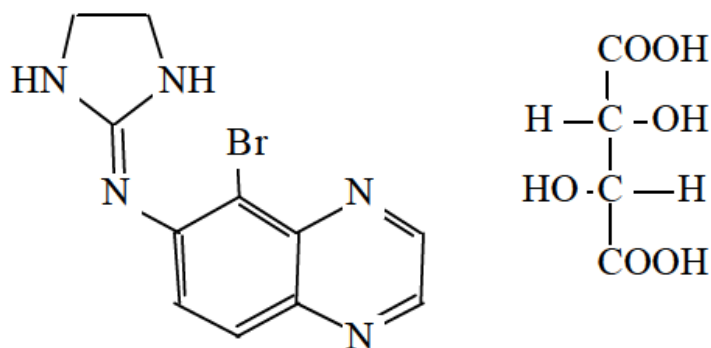
#### Drug Substance

Proper name: Brimonidine tartrate

Chemical name: 5-Bromo-6-(2-imidazolidinylideneamino) quinoxaline L-tartrate

Molecular formula and molecular mass:  $C_{11}H_{10}BrN_5 \cdot C_4H_6O_6$  442.24 g/mol

Structural formula:



Physicochemical properties: Brimonidine tartrate is an off-white, pale yellow to pale pink powder, with a melting point range of 202 - 210°C. It is water soluble (34 mg/mL) and soluble in DMSO (>60 mg/mL), slightly soluble in propylene glycol (1.0 mg/mL) and very slightly soluble in ethanol (0.6 mg/mL) and acetone (<0.2 mg/mL). The pH of a 1% solution of brimonidine tartrate in water is 3.5 at room temperature. A  $pK_a$  value of  $7.78 \pm 0.05$  has been determined.

## CLINICAL TRIALS

### Study demographics and trial design

**Table 2: Trials conducted in patients with open-angle glaucoma or ocular hypertension**

Study #	Trial design	Dosage, route of administration and duration	Study subjects (n=number)			Mean age (Range)	Gender (M/F)
			No. Entered	No. Completed	No. in Preferred Analysis		
103-7831	Multicenter, randomized, double-blind, parallel, active control	One drop in each eye twice daily	443	286	394	62.5 (28-84)	107/125
		B – Brimonidine 0.2% T – Timolol 0.5% 1 year	B – 221 T – 222	B – 119 T – 167	B – 186 T – 188	B – 62.7 (28-84) T – 62.2 (34-83)	B – 84/102 T – 103-85
104-7831	Multicenter, randomized, double-blind, parallel, active control	One drop in each eye twice daily	483	305	463	62.3 (28-86)	234/229
		B – Brimonidine 0.2% T – Timolol 0.5% 1 year	B – 292 T – 191	B – 156 T – 149	B – 280 T – 183	B – 63.0 (28-86) T – 61.4 (33-83)	B – 138/142 T – 96/87

\*uneven randomization – 3:2 ratio, brimonidine

### Study results

Brimonidine tartrate ophthalmic solution 0.2% w/v lowers intraocular pressure with minimal effect on cardiovascular parameters (heart rate, systolic and diastolic blood pressure) and no apparent effect on pulmonary parameters (spirometry, respiratory rate).

The long term efficacy of brimonidine tartrate ophthalmic solution 0.2% w/v dosed b.i.d. was demonstrated in two one-year multicentre studies in subjects with open angle glaucoma or ocular hypertension. In these trials, brimonidine tartrate ophthalmic solution 0.2% w/v lowered IOP by mean values of 4.3 mm Hg at trough and 6.7 mm Hg at peak. IOP decreases were maintained for the duration of the studies in the majority of patients; no tachyphylaxis was observed. Nine percent of subjects were discontinued from the studies due to inadequately controlled intraocular pressure.

Plasma concentration-time profiles were similar for both young and elderly healthy volunteers following ocular instillation of a single dose of brimonidine tartrate 0.2%, although the elderly subjects showed a tendency to have a slightly greater systemic exposure to brimonidine. Steady state concentrations were reached by day 7 of multiple dosing (both eyes, b.i.d) in young (23 - 39 years) subjects. Twice daily ocular dosing for 10 days did not change the systemic absorption and disposition parameters of brimonidine in young subjects. The mean  $C_{max}$  was 0.0585 ng/mL and mean  $AUC_{0-12}$  was 0.309 ng·hr/mL after multiple dosing. There was a slight systemic drug accumulation after repeated dosing (accumulation factor: 1.4), consistent with an apparent half-life of 3 hours. Beyond 12 hours after the final dose, plasma concentrations were undetectable or approached the limit of quantitation. Systolic and diastolic blood pressures were generally

lowered by brimonidine tartrate administration. These decreases in blood pressure tended to be slightly greater among the elderly subjects than among the young subjects.

## DETAILED PHARMACOLOGY

### Animal Pharmacology

Receptor binding and functional studies have characterized brimonidine as a potent and selective alpha-2-adrenoceptor agonist. As indicated in Table 3, brimonidine is notably more alpha-2 adrenoceptor selective than clonidine and *p*-aminoclonidine in both radioligand binding and functional assays.

**Table 3: Receptor Pharmacology of Brimonidine, Clonidine and p-Aminoclonidine**

<i>Compound</i>	<i>Radioligand Binding; Ki (nM)*</i>		<i>Functional; EC<sub>50</sub> (nM)*</i>	
	<i>Alpha -1<sup>a</sup></i>	<i>Alpha -2<sup>b</sup></i>	<i>Alpha -1<sup>c</sup></i>	<i>Alpha -2<sup>d</sup></i>
Brimonidine	1850 ± 322 (5)	1.9 ± 0.5 (6)	1490 ± 214 (12)	1.0 ± 0.1 (24)
Clonidine	513 ± 108 (4)	3.4 ± 0.4 (6)	293 ± 47 (4)	4.4 ± 0.4 (11)
p-Aminoclonidine	181 ± 18 (4)	7.8 ± 1.2 (2)	180 ± 10 (8)	1.9 ± 0.2 (9)

\* Mean ± SEM; ‘N’ is noted in parentheses.

<sup>a</sup> [<sup>3</sup>H]Prazosin in human cerebral cortex.

<sup>b</sup> [<sup>3</sup>H]Rauwolscine binding in HT-29 cells.

<sup>c</sup> Contraction of isolated rabbit aorta.

<sup>d</sup> Inhibition of electrically induced contractions in the isolated rabbit vas deferens.

The ocular hypotensive effect of brimonidine has been demonstrated in normotensive rabbits, cats, and monkeys, as well as ocular hypertensive rabbits and monkeys. This effect is maintained following six months of chronic administration to albino rabbits (Table 4).

**Table 4: The IOP Response to Chronic Administration of Brimonidine (b.i.d for 6 months) in Rabbits**

<i>Concentration (%)<sup>a</sup></i>	<i>Acute</i>	<i>Three Months</i>	<i>Six Months</i>
0.08	4.3 <sup>b*</sup>	5.1*	3.8*
0.2	4.0*	6.0*	5.1*
0.5	0.2	6.0*	6.9*
0.8	1.0	6.5*	7.1*

<sup>a</sup> Concentration based on the bitartrate salt.

<sup>b</sup> Mean decrease in treated eye IOP (mm Hg) from vehicle-treated control at 2 hr following the AM dose.

\* Significantly different from vehicle-treated animals (p<0.05) for treated eye

Twenty-eight days of b.i.d dosing of brimonidine tartrate 0.5% to rabbits and monkeys demonstrated that monkeys experience a significantly diminished trough ocular hypotensive effect on chronic dosing. In rabbits, the trough IOP effect was unaltered, however, the peak effect significantly increased with this dosing regimen (confirmed also by 6 month experiments - see Table 4).

The mechanism of action for the ocular hypotensive effect of brimonidine in rabbits and monkeys is predominantly the suppression of aqueous humor production. Trabecular outflow was not found to be affected in monkeys. In rabbits, a secondary mechanism of action includes an enhancement of uveoscleral outflow.

Investigational studies have demonstrated that topically administered brimonidine stimulates a peripheral alpha-2 adrenoceptor to lower IOP in rabbits. SKF 104078, the selective postjunctional alpha-2 receptor antagonist, did not block the ocular hypotensive effects of brimonidine in rabbits, suggesting that the vascular postjunctional alpha-2 adrenoceptor is not involved in the IOP response in this species. The data in monkeys suggest that the IOP and cardiovascular responses to brimonidine are mediated by an imidazoline receptor located in the central nervous system (CNS). The miotic response to brimonidine which occurs in monkeys is mediated by an alpha-2 adrenoceptor.

When the action of brimonidine as a neuroprotective agent was evaluated in *in vitro* and *in vivo* pharmacological studies in rats, no deleterious effects on the optic nerve were observed.

## Human Pharmacology

### *Mechanism of Action*

The effect of brimonidine on aqueous humour dynamics was determined in 21 ocular hypertensive patients. Measurements were made at baseline and following one week (Day 8) of twice daily application of one drop of brimonidine tartrate 0.2% to one eye and vehicle to the fellow eye, in a double-blind fashion. Aqueous flow (Fa,  $\mu\text{L}/\text{min}$ ) and outflow capacity ( $C_{\text{fl}}$ ,  $\mu\text{L}/\text{min}/\text{mmHg}$ ) were determined using a fluorophotometric technique. Intraocular pressure (IOP, mmHg), tonographic outflow facility ( $C_{\text{ton}}$ ,  $\mu\text{L}/\text{min}/\text{mmHg}$ ), and episcleral venous pressure (Pev, mmHg) were also measured. Uveoscleral outflow ( $\mu\text{L}/\text{min}$ ) by fluorophotometry ( $Fu_{\text{fl}}$ ) or tonography ( $Fu_{\text{ton}}$ ) was calculated from  $C_{\text{fl}}$  or  $C_{\text{ton}}$  values, respectively.

The results of this study (mean $\pm$ SEM) are reported in Table 5. They indicate that brimonidine reduces IOP in humans by decreasing aqueous inflow and increasing uveoscleral outflow.

**Table 5: Effects of Brimonidine on Aqueous Humour Dynamics**

	<i>Control Eye</i>		<i>Treated Eye</i>	
	<i>Baseline</i>	<i>Day 8</i>	<i>Baseline</i>	<i>Day 8</i>
IOP	21.3 $\pm$ 1.0	20.0 $\pm$ 0.6*	20.6 $\pm$ 0.8	15.9 $\pm$ 0.6*†
Fa	2.6 $\pm$ 0.2	2.3 $\pm$ 0.1*	2.5 $\pm$ 0.2	2.0 $\pm$ 0.1*
$Fu_{\text{fl}}$	0.35 $\pm$ 0.20	0.50 $\pm$ 0.17	0.12 $\pm$ 0.28	0.65 $\pm$ 0.16*
$Fu_{\text{ton}}$	0.28 $\pm$ 0.31	0.08 $\pm$ 0.35	0.25 $\pm$ 0.37	1.02 $\pm$ 0.11*†
$C_{\text{fl}}$	0.22 $\pm$ 0.03	0.16 $\pm$ 0.02*	0.22 $\pm$ 0.03	0.21 $\pm$ 0.03
$C_{\text{ton}}$	0.17 $\pm$ 0.01	0.19 $\pm$ 0.02	0.19 $\pm$ 0.03	0.16 $\pm$ 0.02
Pev	8.9 $\pm$ 0.5	8.5 $\pm$ 0.4	8.8 $\pm$ 0.5	9.2 $\pm$ 0.3

\* p0.05 vs baseline

† p0.05 vs control

### *Pharmacodynamics*

In short-term studies (up to four days) in normal healthy volunteers, brimonidine tartrate ophthalmic solution lowered IOP (intraocular pressure) significantly better than vehicle at all concentrations tested (0.02 - 0.5%) and was found to be safe and comfortable. At these concentrations, the peak effect on IOP was observed between one and four hours post-instillation. The greatest reduction in IOP was dose-related, reaching a maximal decrease from baseline of up to 40% with brimonidine tartrate 0.5%. In the morning (12 hours after the evening instillation), the 0.08% and 0.2% concentrations reached a maximal IOP lowering effect following two days of b.i.d dosing. This was observed with the 0.5% concentration, however, 12 hours after the first instillation. Conjunctival blanching was observed primarily at the 0.35% and 0.5% concentrations, and was generally mild or moderate in nature. There was a significantly greater incidence of dry eye seen only with brimonidine tartrate 0.5% as compared to vehicle, although this finding was also reported at the lower concentrations. The overall mean decrease in pupil size and systolic blood pressure was generally greater with brimonidine 0.2% and 0.5% than with vehicle. This change in systolic blood pressure was not judged to be clinically significant. Heart rate, diastolic blood pressure, visual acuity and cup-disc ratio did not appear to be significantly affected by brimonidine treatment (as compared to vehicle). Additionally, at the concentrations tested in these healthy volunteer studies, a contralateral effect of brimonidine was not observed.

When evaluated in open-angle glaucoma and ocular hypertensive patients at concentrations of 0.08%, 0.2% and 0.5% for one month (b.i.d), brimonidine tartrate was found to be both efficacious and safe. All concentrations tested were significantly more effective than vehicle in lowering elevated IOP. The two higher concentrations of brimonidine tartrate were also more effective than the 0.08% concentration. Brimonidine tartrate 0.5%, however, was not any more effective than 0.2% for long-term treatment. The peak effect on IOP occurred at two hours for brimonidine tartrate 0.08%, 0.2%, and 0.5%. The greatest decrease in IOP was dose-related, with a maximum reduction of 27% from baseline with brimonidine tartrate 0.2%, and 31% from baseline with brimonidine tartrate 0.5%. Brimonidine tartrate 0.5% was associated with a greater incidence of side effects than brimonidine tartrate 0.2% and 0.08%, including blurring, foreign body sensation, fatigue and drowsiness. Dry mouth was seen more often in all active treatment groups than in the vehicle group. This event was also seen at a higher incidence with brimonidine tartrate 0.5% than with brimonidine tartrate 0.08%. Although heart rate did not appear to be significantly affected by brimonidine treatment, diurnal measurements of blood pressure indicated that brimonidine tartrate 0.5% was associated with a greater decrease than was vehicle or the lower brimonidine strengths. The mean blood pressure decreases observed were not considered to be clinically significant.

### *Systemic Pharmacokinetics*

Systemic absorption of brimonidine after ocular administration of a single dose (both eyes) of brimonidine tartrate 0.08%, 0.2% and 0.5% to healthy volunteers, produced dose-dependent increases in  $C_{max}$  and AUC. AUC increased proportionally with dose between the 0.08% and 0.2% doses.



## TOXICOLOGY

### Acute Toxicity

The acute median lethal dose (LD<sub>50</sub>) or minimum lethal dose (MLD) values of brimonidine were evaluated in mice, rats, rabbits, and dogs by oral and intravenous (i.v.) administration. The LD<sub>50</sub> or MLD values for each study are listed below:

<i>Species</i>	<i>Route</i>	<i>LD<sub>50</sub></i> <i>(mg/kg)*</i>	<i>MLD</i> <i>(mg/kg)*</i>
Mouse	oral	50	>8**
	i.v.*	50	Not performed
Rat	oral	100	>8**
	i.v.	100-150	Not performed
Rabbit	oral	Not performed	>6
	i.v.	Not performed	20-50
Dog	oral	Not performed	0.5
	i.v.	Not performed	0.05

\* The doses are expressed as the base except in the mouse and rat MLD data, where they are expressed as brimonidine tartrate.

\*\* The data from additional single dose oral studies of 0.2% and 0.5% solutions of brimonidine tartrate in mice and rats showed that the oral MLD is greater than 10 mg/kg.

The most frequently observed clinical signs in the acute/single dose toxicity studies were primarily due to the exaggerated pharmacological hypotensive effect of the compound. These signs included: sedation, ataxia, prostration, ptosis, reduced/loss of blink reflex, opacification of the cornea, hypotension, bradycardia, hypothermia, respiratory depression, respiratory arrest and circulatory collapse. The ocular changes were seen only after doses at or above the minimum lethal dose.

### Long-term Toxicity

Long-term toxicity studies with brimonidine tartrate in various concentrations using mice, rats, rabbits, dogs and monkeys were conducted for durations of up to one year. The most notable effects seen in these studies were related to the known pharmacological effect of brimonidine.

Brimonidine was administered in repeated oral doses to mice (3 studies – 12 to 13 weeks), rats (6 studies – 6 days to 1 year), dogs (2 studies – 4 to 14 weeks) and monkeys (2 studies – 1 year each). It was also administered ocularly to rabbits (2 studies – 1 and 6 months) and dogs (1 study - 4 weeks) and monkeys (1 study - 1 year). There were no observable adverse effects in oral dosing of mice at approximately 165 times the recommended ocular human dose, rats at approximately 80 times the recommended ocular human dose, rabbits at approximately 25 times the recommended ocular human dose, dogs at approximately 55 times the recommended ocular human dose, and monkeys at 33 times the recommended ocular human dose. Dosage levels of approximately 330 times greater than those recommended for human ocular use showed toxic effects that were consistent with the pharmacological class of the compound.

Chronic oral dosing studies were performed at extreme levels of approximately 3000 times the recommended human ocular dose. At these extreme doses, mice showed goblet cell hyperplasia and depletion in the rectum and colon, hypertrophy of the tunica muscularis of small and large

intestine, and hyperplasia of the non-glandular epithelium of the stomach. Rats dosed orally at approximately 1500 times the human ocular dose, showed thickening of muscularis mucosa of small intestine, and a dose related incidence of ileal intussusception was observed in all rats, but no associated lesions or morphological changes were observed. Evidence of toxicity characterised by decreased body weight gain and/or decreased food consumption was often seen at the higher oral doses in the mouse, rat and monkey. The most notable effects seen in the subacute studies was an exaggerated pharmacological effect characterised by sedation, ataxia, hypoactivity, ptosis, decreased muscle tone, hypotension and bradycardia.

There were no observable adverse effects in ocular dosing of rabbits up to approximately 120 times the recommended ocular human dose, dogs up to approximately 20 times the recommended ocular human dose, and monkeys up to approximately 40 times the recommended ocular human dose.

### **Carcinogenicity**

There was no compound-related oncogenic effect observed in either mice or rats studies.

The maximal brimonidine plasma concentrations after oral administration of 2.5 mg base/kg/day to mice for 21 months correspond to approximately 77 times the human systemic exposure to brimonidine tartrate ophthalmic solution 0.2% instilled in each eye (one drop) twice daily for 10 days, and approximately 44 times the human systemic exposure to brimonidine tartrate ophthalmic solution 0.5% administered as a single dose (one drop in each eye). After two years of oral administration at 1.0 mg base/kg/day to rats, plasma concentrations were approximately 118 times greater than those seen in humans receiving one drop of brimonidine tartrate ophthalmic solution 0.2% in each eye b.i.d for 10 days, and approximately 67 times greater than those seen in humans receiving a single dose of brimonidine tartrate ophthalmic solution 0.5% (one drop in each eye). There were no observable tumorigenic effects seen in mice or rats dosed at 2.5 mg base/kg/day (approximately 830 times the recommended human ocular dose), for up to 24 months.

### **Mutagenicity**

Brimonidine was not mutagenic or cytogenic in a series of *in vitro* and *in vivo* studies including the Ames test, host-mediated assay, chromosomal aberration assay in Chinese Hamster Ovary (CHO) cells, cytogenic studies in mice and dominant lethal assay.

### **Reproduction and Teratology**

Reproductive toxicology studies conducted with brimonidine in rats and rabbits showed that brimonidine had no adverse effects on fertility and general reproductive performance, and showed no evidence of embryo-lethal or teratogenic activity at the dosages administered.

The mean maximal plasma brimonidine concentrations measured during the rat teratogenicity study (1.65 mg base/kg/day, orally) were approximately 333 times the human systemic exposure to brimonidine tartrate ophthalmic solution 0.2% instilled in each eye (one drop) twice daily for 10 days, and approximately 189 times the human systemic exposure to brimonidine tartrate

ophthalmic solution 0.5% administered as a single dose (one drop in each eye). Mean maximal plasma brimonidine concentrations in the rabbit teratogenicity study (3.33 mg base/kg/day, orally) were approximately 24 times greater than plasma concentrations seen in humans receiving one drop of brimonidine tartrate ophthalmic solution 0.2% in each eye b.i.d for 10 days, and approximately 14 times greater than plasma levels seen in humans receiving a single dose of brimonidine tartrate ophthalmic solution 0.5% (one drop in each eye).

There were no treatment-related reproductive and teratological effects observed in the F1 rat pup group, although a reduction in body weight was observed at a dose level of 1.65 mg base/kg/day, after 14 days. Dose related reduction in body weight gains were observed in rat dams at dose levels of 0.66 and 1.65 mg base/kg/day after 15 days.

In one rabbit study, body weight gain and food consumption in the low and mid-dose groups was comparable to the control group throughout the study. Spontaneous abortions occurred in two of eight rabbits at the 3.3 mg base/kg/day level (gestation day 21 or 23), and may have been the result of the exaggerated pharmacological effects observed at this level. No abortions occurred at the 0.165 or 0.66 mg base/kg/day level. Maternal necropsy was generally unremarkable. There was no evidence of treatment-related embryotoxicity, fetal toxicity, or teratogenicity at dosage levels up to 3.3 mg base/kg/day (approximately 1100 times the recommended human ocular dose). In another study involving 20 rabbit dams, dosed orally up to 2.64 mg base/kg/day, no adverse effects were observed other than a decrease in weight gain during the dosing period, and no treatment related embryo-lethal or teratogenic effects were observed.

## REFERENCES

1. Barnebey H.S., Robin A.L., Zimmerman T.J., Morrison J.C. et al. The efficacy of brimonidine in decreasing elevations in intraocular pressure after laser trabeculoplasty. *Ophthalmology* 1993; 100: 1083-1088.
2. Burke J., Manlapaz C., Kharlamb A., Runde E., Padillo E., Spada C., Nieves A., Munk S., MacDonald T., Garst M., Rosenthal A., Batoosingh A., David R., Walt J., Wheeler L. Therapeutic use of alpha2-adrenoceptor agonists in glaucoma. In: Lanler S., Linbird L., eds. *Alpha2-adrenergic receptors: Structure, function and therapeutic implications*. Reading, United Kingdom, Harwood Academic Publishers, 1996 (in press).
3. David R., Spaeth G.L., Clevenger C.E. et al. Brimonidine in the prevention of intraocular pressure elevation following argon laser trabeculoplasty. *Arch Ophthalmol* 1993; 111: 1387-1390.
4. Derik R.J., Walters T.R., Robin A.L. et al. Brimonidine tartrate: A one month dose response study. *Invest Ophthalmol Vis Sci* 1993; 34(4): 929 (1138).
5. Pasquale L.R., Nordlund J.R., Robin A.L., Rudikoff M.T., Ordman J., Walt J.G., Chen K.S. A comparison of the cardiovascular and pulmonary effects of brimonidine 0.2%, timolol 0.5% and betaxolol suspension 0.25%. *Invest Ophthalmol Vis Sci* 1993; 34(4): 929 (1139).
6. Spaeth G.L., David R., Clevenger C.E., Perell H.F., Siegel L.I. The effects of brimonidine tartrate on the incidence of intraocular pressure (IOP) spikes following argon laser trabeculoplasty. *Invest Ophthalmol Vis Sci* 1992; 33(4): 1159 (2340).
7. Toris C.B., Camras C.B., Yablonski M.E. Effects of brimonidine on aqueous humour dynamics in human eyes. *Invest Ophthalmol Vis Sci* 1994; 35(4): 2052 (3703).
8. Walters T.R., Repass R.L., Sargent J.P. et al. A pilot study of the efficacy and safety of AGN 190342-LF 0.02% and 0.08% in patients with elevated intraocular pressure. *Invest Ophthalmol Vis Sci* 1991; 32(4): 988 (1572).
9. Adverse Drug Reactions Reports filed with Allergan Inc. 1997/98.
10. Lai, R.K., Hasson, D., Chun, T., & Wheeler, L. (1997). Neuroprotective effect of ocular hypotensive agent brimonidine. XIth congress of the European Society of Ophthalmology, 439-444.
11. Allergan Inc., Product Monograph; Alphagan® (Brimonidine Tartrate Ophthalmic Solution, 0.2% w/v) October 8, 2019; control number 166703

**PART III: CONSUMER INFORMATION**

**Pr RIVA-BRIMONIDINE  
Brimonidine Tartrate Ophthalmic Solution  
0.2% w/v**

This leaflet is part III of a three-part “Product Monograph” published when RIVA-BRIMONIDINE was approved for sale in Canada and is designed specifically for Consumers. This leaflet is a summary and will not tell you everything about RIVA-BRIMONIDINE. Contact your doctor or pharmacist if you have any questions about the drug.

**ABOUT THIS MEDICATION**

**What the medication is used for:**

RIVA-BRIMONIDINE eye drops are used to reduce high pressure in the eye in patients with chronic open-angle glaucoma or ocular hypertension.

**What it does:**

RIVA-BRIMONIDINE is a preserved eye drop solution that reduces the amount of fluid flowing into the eye and increases the amount of fluid flowing out of the eye. This reduces the pressure inside the eye.

**When it should not be used:**

Do not use RIVA-BRIMONIDINE:

- If you are allergic to brimonidine tartrate or any of the other ingredients (See what the nonmedicinal ingredients are)
- If you are receiving monoamine oxidase (MAO) inhibitor therapy
- In neonates and infants below the age of 2 years

**What the medicinal ingredient is:**

Brimonidine tartrate

**What the nonmedicinal ingredients are:**

0.005% benzalkonium chloride as preservative, citric acid monohydrate, polyvinyl alcohol, sodium chloride, sodium citrate dihydrate, sodium hydroxide/hydrochloric acid (pH adjusters) and water for injection

**What dosage forms it comes in:**

Ophthalmic solution, brimonidine tartrate 0.2%, w/v

**WARNINGS AND PRECAUTIONS**

RIVA-BRIMONIDINE may cause drowsiness and fatigue or blurred vision. Do not drive, use heavy machinery or engage in hazardous activities or activities requiring mental alertness, until these conditions have passed.

BEFORE you use RIVA-BRIMONIDINE talk to your doctor or pharmacist if:

- you are breastfeeding a baby, pregnant or intend to become pregnant.
- you have any allergies to this drug, or to similar drugs (ask your doctor) or to RIVA-BRIMONIDINE’s ingredients or components of its container.
- you are taking or intend to take other prescription or non-prescription drugs. This is particularly important if you are taking medicine to lower blood pressure or to treat heart disease.
- you wear contact lenses. The preservative in RIVA-BRIMONIDINE (benzalkonium chloride) may be absorbed by soft (hydrophilic) contact lenses. Lenses should be removed prior to using RIVA-BRIMONIDINE and kept out for 15 minutes after use.

**INTERACTIONS WITH THIS MEDICATION**

Drugs that may interact with RIVA-BRIMONIDINE include:

Central nervous system depressants (alcohol, barbiturates, opiates, sedatives, or anesthetics), heart and blood pressure medications such as alpha-agonists, medication such as beta-blockers (ophthalmic and/or systemic), antihypertensives, cardiac glycoside, tricyclic antidepressants and clonidine.

Drug interactions studies have not been done for brimonidine tartrate ophthalmic solution 0.2% w/v.

**PROPER USE OF THIS MEDICATION**

**Usual adult dose:**

Normally, you should put one drop of RIVA-BRIMONIDINE in each eye that needs treatment, twice every day, about 12 hours apart, following the instructions for use below.

You must not use the bottle if the tamper-proof seal on the bottle neck is broken before you first use it.

Follow the following steps to help you use RIVA-BRIMONIDINE properly:

Wash your hands. Tilt your head back and look at the ceiling.

1. Gently pull down the lower eyelid to create a small pocket.
2. Turn the bottle upside down and squeeze it gently to release one drop into each eye that needs treatment.
3. Let go of the lower lid, and close your eye for 30 seconds.



If a drop misses your eye, try again.

RIVA-BRIMONIDINE contains a preservative called benzalkonium chloride which may discolor soft contact lenses. If you wear contact lenses, remove them before using RIVA-BRIMONIDINE. Wait 15 minutes after using the drops before you put your lenses back in.

Always use RIVA-BRIMONIDINE exactly as your doctor has instructed you. If you use RIVA-BRIMONIDINE with another eye drop, leave at least five minutes between putting in RIVA-BRIMONIDINE and then the other drops.

To help prevent infections, do not let the tip of the bottle touch your eye or anything else. Put the cap back on and close the bottle immediately after you have used it.

**Overdose:**

If you accidentally use too many drops, just go back to your regular twice a day dosing the next day. If you have any concerns, talk to your doctor or pharmacist.

If you think you have taken too much RIVA-BRIMONIDINE, contact your healthcare professional, hospital emergency department or regional poison control centre immediately, even if there are no symptoms.

**Missed Dose:**

If you forget to apply your eye drops at your normal time, simply apply them as soon as you remember. Then go back to the original schedule as directed by your doctor. **Do not try to catch up on missed drops by applying more than one dose at a time.**

**SIDE EFFECTS AND WHAT TO DO ABOUT**

Very common	Occurs in more than 1 out of 10 patients
Common	Occurs in between 1 and 10 out of every 100 patients
Uncommon	Occurs in between 1 and 10 out of every 1,000 patients

The following side effects may be seen with RIVA-BRIMONIDINE. If these persist or cause you concern, consult your doctor.

**Very common:**

- Dry mouth
- Irritation of the eye (eye redness, burning, stinging, a feeling of something in the eye)
- Blurred vision
- Headache
- Tiredness, sleepiness or drowsiness

**Common:**

- Local irritation (inflammation and swelling of the eyelid, pain and tearing)

- Sensitivity to light
- Erosion on the surface of the eye and staining
- Eye dryness
- Abnormal vision
- Dizziness
- Cold-like symptoms
- Symptoms involving the stomach and digestion
- Abnormal taste
- General weakness

**SERIOUS SIDE EFFECTS, HOW OFTEN THEY HAPPEN AND WHAT TO DO ABOUT THEM**

Symptom / effect		Talk with your doctor or pharmacist		Stop taking drug and call your doctor or pharmacist
		Only if severe	In all cases	
Uncommon	Bradycardia/ heart rate decreased		✓	
	Hypotension/ blood pressure decreased		✓	

*This is not a complete list of side effects. For any unexpected effects while taking RIVA-BRIMONIDINE, contact your doctor or pharmacist.*

**HOW TO STORE IT**

RIVA-BRIMONIDINE should be stored in the original container at 15° C to 30°C. Discard unused solution at the end of treatment.

Do not use the drops after the expiry date (marked “Exp”) on the bottle and the box.

Keep out of reach and sight of children.

**Reporting Side Effects**

You can report any suspected side effects associated with the use of health products to Health Canada by:

- Visiting the Web page on Adverse Reaction Reporting (<https://www.canada.ca/en/health-canada/services/drugs-health-products/medeffect-canada/adverse-reaction-reporting.html>) for information on how to report online, by mail or by fax; or
- Calling toll-free at 1-866-234-2345

*NOTE: Contact your health professional if you need information about how to manage your side effects. The Canada Vigilance Program does not provide medical advice.*

## MORE INFORMATION

### If you want more information about RIVA-BRIMONIDINE:

- Talk to your healthcare professional
- Find the full product monograph that is prepared for healthcare professionals and includes this Consumer Information by visiting the Health Canada website (<https://health-products.canada.ca/dpd-bdpp/index-eng.jsp>); the manufacturer's website [www.labriva.com](http://www.labriva.com), or by calling 1-800-363-7988.

This leaflet was prepared by:

**Laboratoire Riva Inc.**  
660 Boul. Industriel  
Blainville, Quebec  
J7C 3V4

[www.labriva.com](http://www.labriva.com)

Last Revised: April 21, 2021